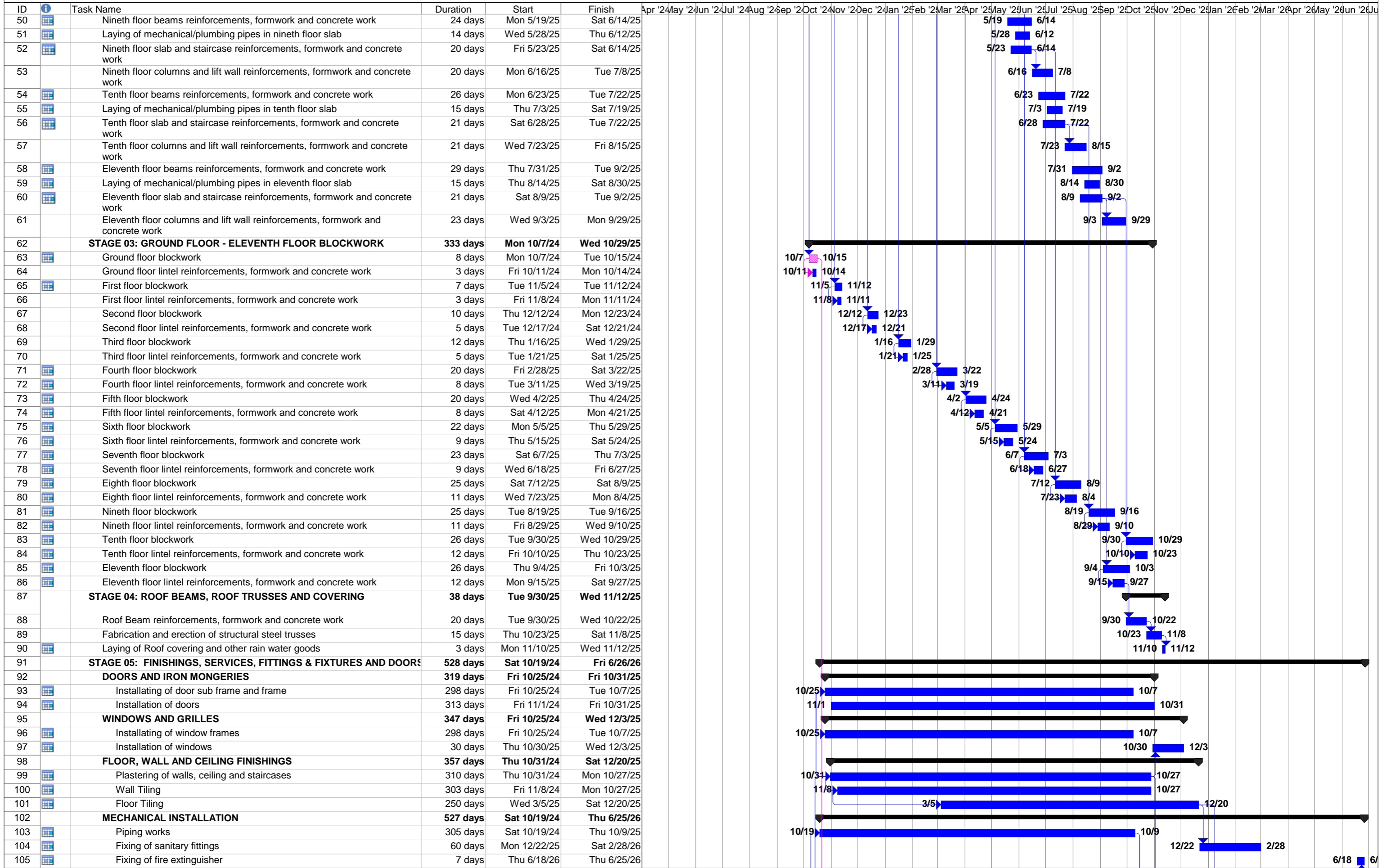


THE WESTBURY

ID	Task Name	Duration	Start	Finish	Apr '24	May '24	Jun '24	Jul '24	Aug '24	Sep '24	Oct '24	Nov '24	Dec '24	Jan '25	Feb '25	Mar '25	Apr '25	May '25	Jun '25	Jul '25	Aug '25	Sep '25	Oct '25	Nov '25	Dec '25	Jan '26	Feb '26	Mar '26	Apr '26	May '26	Jun '26
1	THE WESTBURY	725 days	Mon 3/4/24	Fri 6/26/26	[Gantt bar from 3/4/24 to 6/26/26]																										
2	MOBILISATION TO SITE/PRELIMINARY SITE ACTIVITIES	12 days	Mon 3/4/24	Sat 3/16/24	[Gantt bar from 3/4/24 to 3/16/24]																										
3	Site clearance	2 days	Mon 3/4/24	Tue 3/5/24	[Gantt bar from 3/4/24 to 3/5/24]																										
4	Construction and setting up of site office	4 days	Wed 3/6/24	Sat 3/9/24	[Gantt bar from 3/6/24 to 3/9/24]																										
5	Setting out and checking	6 days	Mon 3/11/24	Sat 3/16/24	[Gantt bar from 3/11/24 to 3/16/24]																										
6	STAGE 01: SUBSTRUCTURE/GROUNDWORK	123 days	Mon 3/18/24	Wed 8/7/24	[Gantt bar from 3/18/24 to 8/7/24]																										
7	Piling Work	65 days	Mon 3/18/24	Fri 5/31/24	[Gantt bar from 3/18/24 to 5/31/24]																										
8	Pile Test	13 days	Sat 6/1/24	Sat 6/15/24	[Gantt bar from 6/1/24 to 6/15/24]																										
9	Breaking of Pile Head	3 days	Mon 6/17/24	Wed 6/19/24	[Gantt bar from 6/17/24 to 6/19/24]																										
10	Pile Caps	20 days	Tue 6/18/24	Wed 7/10/24	[Gantt bar from 6/18/24 to 7/10/24]																										
11	Ground Beam	20 days	Fri 7/5/24	Sat 7/27/24	[Gantt bar from 7/5/24 to 7/27/24]																										
12	Filling to make up levels with filling sand	3 days	Mon 7/29/24	Wed 7/31/24	[Gantt bar from 7/29/24 to 7/31/24]																										
13	Damproofing and blinding for floor slab	1 day	Thu 8/1/24	Thu 8/1/24	[Gantt bar from 8/1/24 to 8/1/24]																										
14	Installation of sleeves and pipes for services installations	1 day	Fri 8/2/24	Fri 8/2/24	[Gantt bar from 8/2/24 to 8/2/24]																										
15	Oversite conceret slab reinforcements, formwork and concrete work	4 days	Sat 8/3/24	Wed 8/7/24	[Gantt bar from 8/3/24 to 8/7/24]																										
16	STAGE 02: GROUND FLOOR FRAME TO ELEVENTH FLOOR SLAB AND FRAME	358 days	Thu 8/8/24	Mon 9/29/25	[Gantt bar from 8/8/24 to 9/29/25]																										
17	Ground floor columns and lift wall reinforcements, formwork and concrete work	12 days	Thu 8/8/24	Wed 8/21/24	[Gantt bar from 8/8/24 to 8/21/24]																										
18	First floor beams reinforcements, formwork and concrete work	20 days	Thu 8/15/24	Fri 9/6/24	[Gantt bar from 8/15/24 to 9/6/24]																										
19	Laying of mechanical/plumbing pipes in first floor slab	12 days	Thu 8/22/24	Wed 9/4/24	[Gantt bar from 8/22/24 to 9/4/24]																										
20	First floor slab and staircase reinforcements, formwork and concrete work	16 days	Thu 8/22/24	Mon 9/9/24	[Gantt bar from 8/22/24 to 9/9/24]																										
21	First floor columns and lift wall reinforcements, formwork and concrete work	14 days	Sat 9/7/24	Mon 9/23/24	[Gantt bar from 9/7/24 to 9/23/24]																										
22	Second floor beams reinforcements, formwork and concrete work	20 days	Mon 9/16/24	Tue 10/8/24	[Gantt bar from 9/16/24 to 10/8/24]																										
23	Laying of mechanical/plumbing pipes in second floor slab	12 days	Mon 9/23/24	Sat 10/5/24	[Gantt bar from 9/23/24 to 10/5/24]																										
24	Second floor slab and staircase reinforcements, formwork and concrete work	16 days	Fri 9/20/24	Tue 10/8/24	[Gantt bar from 9/20/24 to 10/8/24]																										
25	Second floor columns and lift wall reinforcements, formwork and concrete work	15 days	Wed 10/9/24	Fri 10/25/24	[Gantt bar from 10/9/24 to 10/25/24]																										
26	Third floor beams reinforcements, formwork and concrete work	22 days	Mon 10/21/24	Thu 11/14/24	[Gantt bar from 10/21/24 to 11/14/24]																										
27	Laying of mechanical/plumbing pipes in third floor slab	12 days	Wed 10/30/24	Tue 11/12/24	[Gantt bar from 10/30/24 to 11/12/24]																										
28	Third floor slab and staircase reinforcements, formwork and concrete work	17 days	Sat 10/26/24	Thu 11/14/24	[Gantt bar from 10/26/24 to 11/14/24]																										
29	Third floor columns and lift wall reinforcements, formwork and concrete work	13 days	Thu 11/14/24	Thu 11/28/24	[Gantt bar from 11/14/24 to 11/28/24]																										
30	Fourth floor beams reinforcements, formwork and concrete work	22 days	Mon 11/25/24	Thu 12/19/24	[Gantt bar from 11/25/24 to 12/19/24]																										
31	Laying of mechanical/plumbing pipes in fourth floor slab	12 days	Wed 12/4/24	Tue 12/17/24	[Gantt bar from 12/4/24 to 12/17/24]																										
32	Fourth floor slab and staircase reinforcements, formwork and concrete work	18 days	Fri 11/29/24	Thu 12/19/24	[Gantt bar from 11/29/24 to 12/19/24]																										
33	Fourth floor columns and lift wall reinforcements, formwork and concrete work	16 days	Fri 12/20/24	Tue 1/7/25	[Gantt bar from 12/20/24 to 1/7/25]																										
34	Fifth floor beams reinforcements, formwork and concrete work	23 days	Mon 1/6/25	Fri 1/31/25	[Gantt bar from 1/6/25 to 1/31/25]																										
35	Laying of mechanical/plumbing pipes in fifth floor slab	13 days	Wed 1/15/25	Wed 1/29/25	[Gantt bar from 1/15/25 to 1/29/25]																										
36	Fifth floor slab and staircase reinforcements, formwork and concrete work	18 days	Sat 1/11/25	Fri 1/31/25	[Gantt bar from 1/11/25 to 1/31/25]																										
37	Fifth floor columns and lift wall reinforcements, formwork and concrete work	16 days	Sat 2/1/25	Wed 2/19/25	[Gantt bar from 2/1/25 to 2/19/25]																										
38	Sixth floor beams reinforcements, formwork and concrete work	23 days	Fri 2/7/25	Wed 3/5/25	[Gantt bar from 2/7/25 to 3/5/25]																										
39	Laying of mechanical/plumbing pipes in sixth floor slab	13 days	Tue 2/18/25	Tue 3/4/25	[Gantt bar from 2/18/25 to 3/4/25]																										
40	Sixth floor slab and staircase reinforcements, formwork and concrete work	18 days	Thu 2/13/25	Wed 3/5/25	[Gantt bar from 2/13/25 to 3/5/25]																										
41	Sixth floor columns and lift wall reinforcements, formwork and concrete work	17 days	Thu 3/6/25	Tue 3/25/25	[Gantt bar from 3/6/25 to 3/25/25]																										
42	Seventh floor beams reinforcements, formwork and concrete work	23 days	Wed 3/12/25	Mon 4/7/25	[Gantt bar from 3/12/25 to 4/7/25]																										
43	Laying of mechanical/plumbing pipes in seventh floor slab	13 days	Fri 3/21/25	Fri 4/4/25	[Gantt bar from 3/21/25 to 4/4/25]																										
44	Seventh floor slab and staircase reinforcements, formwork and concrete work	19 days	Mon 3/17/25	Mon 4/7/25	[Gantt bar from 3/17/25 to 4/7/25]																										
45	Seventh floor columns and lift wall reinforcements, formwork and concrete work	19 days	Tue 4/8/25	Tue 4/29/25	[Gantt bar from 4/8/25 to 4/29/25]																										
46	Eighth floor beams reinforcements, formwork and concrete work	24 days	Mon 4/14/25	Sat 5/10/25	[Gantt bar from 4/14/25 to 5/10/25]																										
47	Laying of mechanical/plumbing pipes in eighth floor slab	13 days	Thu 4/24/25	Thu 5/8/25	[Gantt bar from 4/24/25 to 5/8/25]																										
48	Eighth floor slab and staircase reinforcements, formwork and concrete work	19 days	Sat 4/19/25	Sat 5/10/25	[Gantt bar from 4/19/25 to 5/10/25]																										
49	Eighth floor columns and lift wall reinforcements, formwork and concrete work	20 days	Mon 5/12/25	Tue 6/3/25	[Gantt bar from 5/12/25 to 6/3/25]																										

THE WESTBURY



THE WESTBURY

ID	Task Name	Duration	Start	Finish
106	Testing of Plumbing installations	1 day	Fri 10/10/25	Fri 10/10/25
107	ELECTRICAL WORKS	522 days	Sat 10/19/24	Fri 6/19/26
108	Piping/conducting works in wall	305 days	Sat 10/19/24	Thu 10/16/25
109	Electrical Cabling and Fittings	150 days	Tue 10/28/25	Mon 4/20/26
110	Electrical equipments and external connection	20 days	Tue 5/26/26	Wed 6/17/26
111	Testing of Electrical installations	2 days	Thu 6/18/26	Fri 6/19/26
112	BALUSTRADING, RAILINGS AND FURNITURES	20 days	Thu 1/8/26	Fri 1/30/26
113	Fabrication and installation of balustrades and railings	20 days	Thu 1/8/26	Fri 1/30/26
114	PAINTING AND DECORATING	50 days	Tue 4/21/26	Wed 6/17/26
115	Painting internally	50 days	Tue 4/21/26	Wed 6/17/26
116	Painting Externally	20 days	Tue 5/26/26	Wed 6/17/26
117	Handing over	6 days	Sat 6/20/26	Fri 6/26/26
118	Site cleaning	5 days	Sat 6/20/26	Thu 6/25/26
119	Handing over	1 day	Fri 6/26/26	Fri 6/26/26

