

CAPABILITY STATEMENT

FAP Consulting Engineers

(Civil/Structural Engineers)



Collaboration and Innovation
Understanding the goal of the
architecture Opening the door to new
possibilities

Small or large projects
Existing or new
construction
Residential, commercial, public or private



WELCOME NOTE

We wish to take this opportunity to introduce **FAP Consulting Engineers** and offer our services in assisting you with your structural and civil engineering requirements.

FAP is a boutique engineering firm servicing the needs of clients throughout Nigeria. **FAP** was **established in 2005** and is a fully **Nigerian owned** company. We recognize a need in the industry for a **service** which is **based on solid relationships** and giving clients the **experience**, they pay for. In recent years consulting engineering firms have been growing in size, changing their core services and developing an economy of scale culture. With experienced senior staff spread thin and providing projects a cursory service. In the process, clients have become customs who are part of a financial transaction to improve the bottom line. Our mission is to **get back to basics** and do what a consultant should do, **service clients** and treat each project as a **partnership** so that everyone benefits. The foundation to achieving this, is by engineering cost effective and timely design solutions that result in **solid relationships** and **mutual respect** with clients, project designers and construction teams.

With 10 structural engineers, four engineers in training, and five technicians, **FAP** is large enough to handle big projects, but small enough to maintain communication and coordination. At **FAP**, our goal is to provide sound, safe structures with economical design, and most importantly — to enjoy the work we do and the people we work with.

The FAP Approach

A Well Stated Note... "It's unwise to pay too much, but it's unwise to pay too little. When you pay too much you lose a little money- that is all. When you pay too little, you sometimes lose everything, because the thing you bought was incapable of doing what you bought it to do. The common law of business balance prohibits paying a little and getting a lot... It can't be done. If you deal with the lowest bidder, it's well to add something for the risk you run.

And if you do that, you will have enough to pay for something better."

FAP Consulting Engineers is all too familiar with the focus on construction cost vs. value. We approach each construction project as if we were the owners who have invested a lot of time, energy and money to see successful results. "Shortcutting" is not in our vocabulary.

The successful completion of any project is A PROCESS and NOT AN EVENT. The FAP process seeks to understand what the client wants so we can respond with well-reasoned recommendations and comments that address quality, budget, timelines and long term serviceability.

FAP believes that clear, concise drawings and coordination between the various other project disciplines requires an added measure of time and commitment and is essential for the successful completion of any construction project.

In our efforts to attain successful results, FAP balances three major design goals:

SAFETY- Required by law to meet the minimum safety standards as outlined by the enforceable Building Code. We will not compromise anyone's safety.

ECONOMY- This is desired by most clients and often stressed (mistakenly), as the main objective of a project. Safety and Serviceability are essential factors in this equation.

SERVICEABILITY- This is the most commonly misunderstood and overlooked consideration in most projects. Construction is only the beginning... Maintenance is inevitable and necessary.

It has been our experience that focusing on one or two of these design goals will adversely affect the client's investment... BALANCE is and must be our focus.

Our mission is to provide valuable, cost effective structural engineering services for our clients and to create and maintain a working environment for our employees where the art of structural engineering is advanced, our financial objectives are met, and the realization of personal satisfaction can be achieved.

FAP Services + Portfolio FAP services

Whether it's designing adaptive reuse of historic structures, educational institutions, single or multi-family residential, or retail/office space, FAP has the expertise and creativity to tackle a wide range of structural engineering designs. Projects range in size from N1.8 billion rehabilitation to a single beam design for a homeowner's building. Our strong track record of success allows us to quickly identify your needs and provide innovative solutions to your design challenges.

FAP works on a broad, comprehensive range of projects including housing, retail, office, churches, manufacturing, medical, education and government facilities. Our breadth and depth of expertise allows us to seamlessly move between new, existing and historic buildings and allows us to incorporate the structural design into the architectural vision. Some of our creative ideas have not only met and exceeded client needs they have also garnered a number of testimonies.

REPEAT BUSINESS CLIENT LIST

**Cobblestone
Baron Architects
O2 Investments
Kawrys DDC
Studio-Ola Architects
SI.SA Architects
MOE+ Architects
Conceptstruck
BrownInq
A.T.O Architects
Mr Seyi Oladapo
Idlewood Architects**

WHAT WE ARE WE WORKING NOW

- **Mixed-use Development for Mr. & Mrs Seyi Oladapo**
- **Residential Development on Mekunwen Street, Ikoyi, for Mr Yemi Adunola 5 Storey (N1.1b Construction cost)**
- **Proposed Residential Development for Hazelbury on Probyn road, Ikoyi . Proposed Residential Development for Parkwalk Properties at Onikoyi, Lagos.**
- **Proposed Residential Development for Mike Mbama Okiro at Aso Drive, Abuja.**
- **Proposed Supermarket at Oniru , Victoria Island**
- **Proposed Residential Development at J41 Banana Island for Norsworthy Proposed Residential Development at J8 Banana Island for Rindsan Block of 6 storey at J48, Banana Island, Ikoyi**
- **Proposed Residential Development in Agbhor, Delta State**
- **Proposed Residential Development for Fidap Energy along Reeves Road, Ikoyi (N1b Construction cost)-**
- **Proposed Residential Development in Osborne Foreshore**
- **Block of 7 floors with 3 semi-detached terraces in Osborne Foreshore Reeveshire ,7storey building on Reeves Road, Ikoyi, Lagos.**
- **K14 14 storey building at ... Banana Island, Ikoyi, Lagos.**
- **Tiffany Court, Proposed Four storey on Shafi Sule, Lekki Phase I**
- **Axis Apartment ,6 storey building in Periwinkle Estate, Lekki Phase I**

RECENT AND CURRENT PROJECT LIST

- Office Development for ATO Architects @ Lekki Phase 1
- Shopping Mall for Mrs. Nkechi Onajide @ Lekki Phase 1.
- Residential Development for Jovis Nig. Ltd @ Macdonald,Ikoyi
- New Senate Building for Obafemi Awolowo University,Ile-Ife,OsunState.
- GT Bank Jabi,FCT
- Completion Shed @ Geco-Yard for Schlumberger
- Residential Development for Jovis Nig. Ltd @ Macdonald,Ikoyi
- Affordable Motors Showroom with Workshop, Opebi Road,Ikeja(N120m)
- Luxury Apartments for Omais Investment on Ogundana street,off Allen avenue (N190m)
- Residential Apartment on Admiralty road,Lekki Phase 1 (N80m)
- Redesign and preparation of Drawings for Ogun State Judiciary Headquarters for Strucarch Associates (N.8b)
- Trinity Court 2 @ Mende,Maryland (N80m)
- Luxury Apartments for Lagos Executive Dev. Board on Manuwa Close @ Keffi,Ikoyi, Lagos (N160m)
- Oceanic Bank Branch,Seme,Badagry (N60m)
- Renovation of Residential Unit (Semi –Detached House) @ 8b Oroke Drive,Ikoyi.
- Dangaba Hotel,Jalingo
- Residential Development for Mr Athony Udoekong Elegushi (by Lekki Phase 1)
- Residential Development for Mr Babalola @ Lekki Phase 1
- Renovation of Existing building @ 29 Unity Road,Ikeja,Lagos
- Residential Development for Mr Rickey Mustapha Tarfa @ Mayfair Gardens,Ajah.
- Residential Development for Mr Rickey Mustapha Tarfa @ Lekki Phase1
- Hotel Development for Clothcare Laundry services Nigeria,Ltd. @ No1,Aguleri Road,Independence Layout.
- Mixed used Development for Mr Aliu Abubakar along Badawara road,Kaduna.
- Residential Development for Gbolahan Owolabi Block 54b, Plot 15, Magodo Residential Scheme.
- Residential Development for Mr Ambrose Nwadike @ CBD 6,Plot 1 Sola Oguntade off Durosini Etti Street,Lekki Scheme 1,Lagos.
- Resort Development @ Gbogan,Osogbo for Dr. Wale Babalakin
- Residential Development for Chief Magnus Onyibe @ Lekki Phase1.

- Residential Development for Ms Lara Alagbada @ Lekki Phase 1. 3 storey(N80m)

- Residential Development For Mr Ade Otusanya @ Magodo,3 storey Building (N80m Const.)

ONGOING PROJECTS							
S/N	PROJECT	SCOPE	LOCATION	COST	CLIENT	ROLE	DURATION
1	Daddo Apartments	Commercial Luxury Residential Apartment on 9 upper floors + Ground floor	6A, Oba Adeyinka Oyekan Avenue, Ikoyi, Lagos	N3.5 Billion	OOG ESTATE LIMITED	Consultant Civil/ Structural Engineer role which includes preparation of specification for surveys, Preparation of structural revit models ,coordination meetings,design reports,structural drawings,civil drawings,specifications and supervision .	2 years
2	L5 Banana	Commercial Luxury Residential Apartment on 15 upper floors + Ground floor (2 blocks)	L5,Banana Island,Ikoyi,Lagos.	N20 Billion	Grenadines Homes/Palton Morgan	Consultant Civil/ Structural Engineer role which includes preparation of specification for surveys, Preparation of structural revit models ,coordination meetings,design reports,structural drawings,civil drawings,specifications and supervision .	2.5 years
3	Proposed Head Office Development for the National Sugar Distribution Company	Commercial Office Building on 6 upper floors + Ground floor + Basement	Garki,Abuja	N5.8 Billion	National Sugar Distribution Company	Consultant Civil/ Structural Engineer role which includes preparation of specification for surveys, Preparation of structural revit models ,coordination meetings,design reports,structural drawings,civil drawings,specifications and supervision .	2 Year
4	The Wellspring,Eko Atlantic,Victoria Island	Commercial Luxury Residential Building on 9 upper floors + Ground floor +Basement	Eko Atlantic,Victoria Island	N4.5 Billion	Wellspring Ltd	Consultant Civil/ Structural Engineer role which includes preparation of specification for surveys, Preparation of structural revit models ,coordination meetings,design reports,structural drawings,civil drawings,specifications and supervision .	2 Years

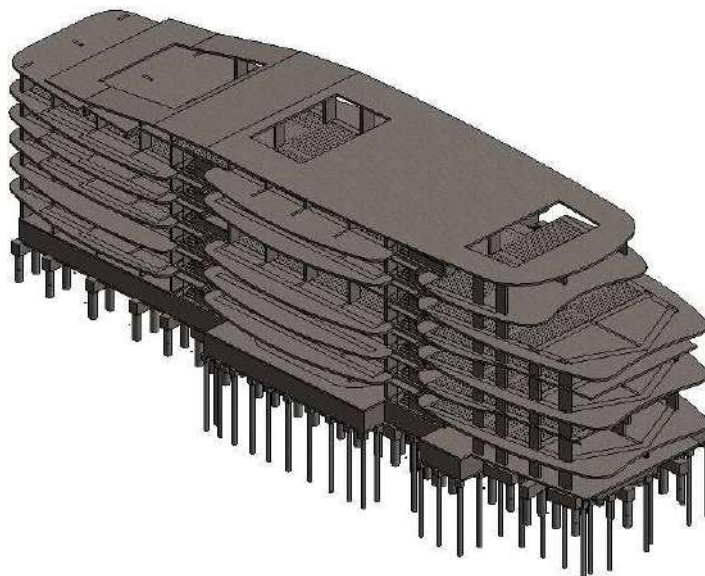
COMPLETED PROJECTS								
S/N	PROJECT	SCOPE	LOCATION	COST	CLIENT	ROLE	DURATION	Methodology
1	Reeveshire	Commercial Luxury Residential Apartment on 7 upper floors + Ground floor	Reeve Road ,Ikoyi,Lagos	N2.0 Billion	Lenox & Blaire	Consultant Civil/ Structural Engineer role which includes preparation of specification for surveys,Preparation of structural revit models ,coordination meetings,design reports,structural drawings,civil drawings,specifications and supervision .	2 years	This is a very interesting building with quite a number of transfer beams at first floor level .This was done to make the car park work .The building was framed with beams and columns.The building is supported on piles.
2	Axis Apartment	Commercial Luxury Residential Apartment on 6 upper floors + Ground floor	Periwinkle Estate,Lekki Phase 1	N1.2 Billion	Private Client	Consultant Civil/ Structural Engineer role which includes preparation of specification for surveys,Preparation of structural revit models ,coordination meetings,design reports,structural drawings,civil drawings,specifications and supervision .	1.5 years	This building is made up of reinforced concrete,column, beam and slab .It is supported on piles.
3	Proposed Head Office	Commercial Office Building on 10 upper floors + Ground floor + Factory + Warehouse	Ibeju-Lekki	N7.0 Billion	Victory Industries Ltd.	Consultant Civil/ Structural Engineer role which includes preparation of specification for surveys,Preparation of structural revit models ,coordination meetings,design reports,structural drawings,civil drawings,specifications and supervision .	2 Year	This building is made of flat slabs spanning 9x9m supported on columns.This building is supported on piles.
4	Keffi Suites	Commercial Luxury Residential Building on 7 upper floors + Ground floor (4 blocks)	Keffi ,Ikoyi	N5 Billion	LSPDC/RINDSAN	Consultant Civil/ Structural Engineer role which includes preparation of specification for surveys,Preparation of structural revit models ,coordination meetings,design reports,structural drawings,civil drawings,specifications and supervision .	2 Years	This building is made up of reinforced concrete,column, beam and slab .It is supported on piles.
5	Novabase	Commercial Residential Building on 5 floors + Ground Floor -(8 Blocks)-128 Apartments	Admiralty Way,Lekki,Lagos	N2 Billion total	AECOM	Consultant Civil/ Structural Engineer role which includes preparation of specification for surveys,Preparation of structural revit models ,coordination meetings,design reports,structural drawings,civil drawings,specifications and supervision .	2.5 year	This building is made up of reinforced concrete,column, beam and slab .It is supported on a 450mm thick raft.
6	Footprint	Commercial Residential Building on 5 floors + Ground Floor -(4 Blocks)-	Admiralty Way,Lekki,Lagos	N1 Billion total	AECOM	Consultant Civil/ Structural Engineer role which includes preparation of specification for surveys,Preparation of structural revit models ,coordination meetings,design reports,structural drawings,civil drawings,specifications and supervision .	2.5 year	This building is made up of reinforced concrete,column, beam and slab .It is supported on a 450mm thick raft.

IMAGES OF SELECTED PROJECTS

THE REVELATIONS, J48 BANANA ISLAND, IKOYI.

Project Details

This is a six-storey building with a basement (hence seven suspended floors). It has a very high headroom at ground level with unique curves around the building. It also has several large cantilevers ranging from 3m to 4m around the house. The reinforced concrete building is supported on piles. FAP is providing structural and civil engineering design on the project.



Client: Cooper Leaves Limited

Construction value: N4billion

Architect: Studio-Ola Architects

Status: Piling Works Ongoing

FOCAL POINT, K14 BANANA ISLAND, IKOYI

Project Details

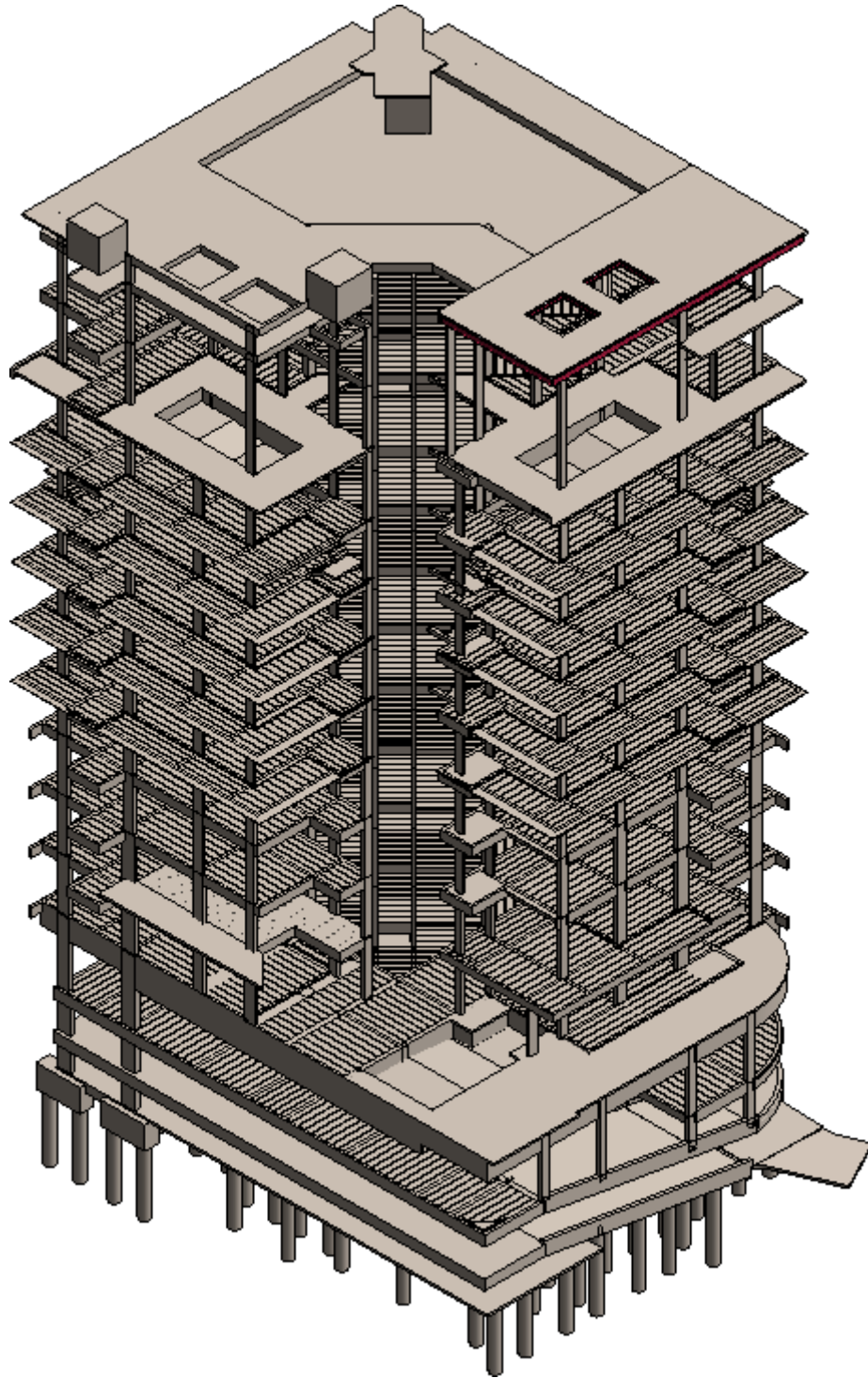
This mixed used development on 15 floors levels. We ensured that blade columns were used all through the building so all the columns were all hidden. In addition to this, we had quite several transfer systems to meet the architectural intent. The reinforced concrete building is supported on piles.

We proposed 3 structural schemes for the floors

- Structural steel
 - Flat slab (Traditional)
 - Post-tensioned Slab
 - Precast ribbed slab
- The client opted for the ribbed slab option. It is important to note that the client is a contractor.



Architectural Impressions of the building



Client: Sermantech

Architect: Baron Architects/Arclocu

Construction value: N6.5billion

Status: Piling Works Ongoing

PROJECT LA MER AT PLOT L5, BANANA ISLAND FORESHORE ESTATE

Project Details,

This is a luxurious residential development as proposed; we have been engaged as the Civil/Structural consultant by Palton Morgan Holdings. We are currently at the design stage.

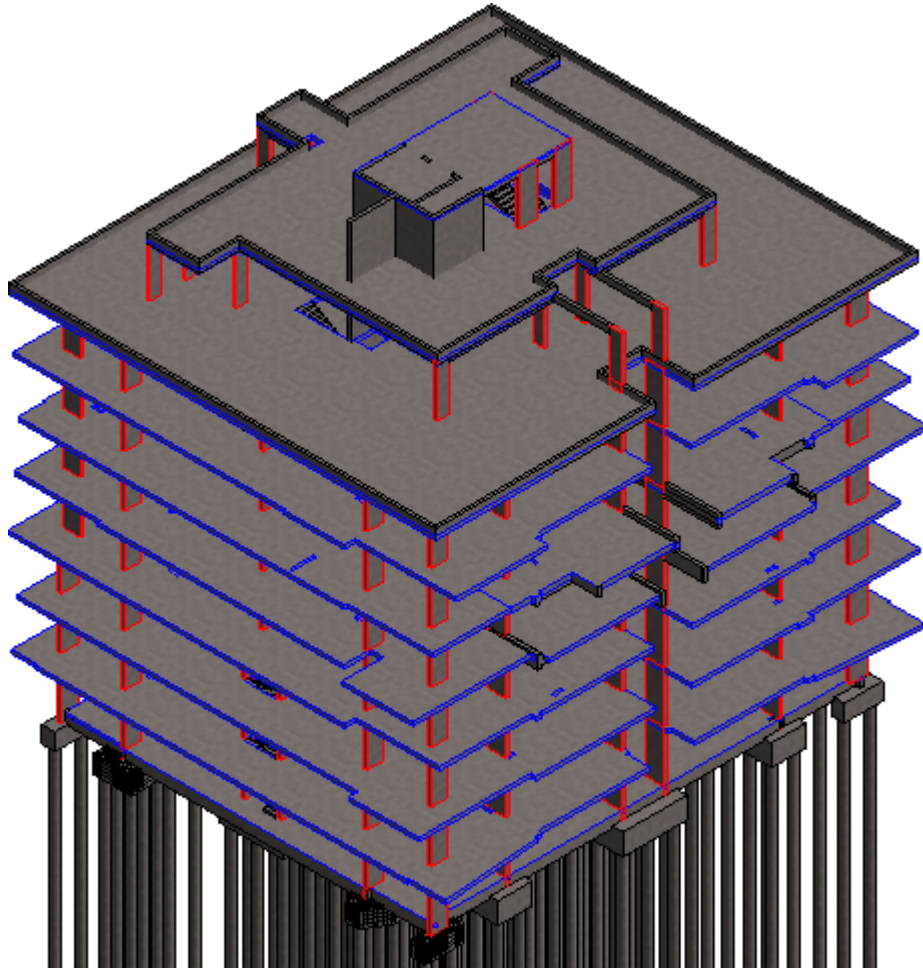


PROPOSED RESIDENTIAL DEVELOPMENT AT K15, BANANA ISLAND, IKOYI

Project Details

This mixed used development consists of 12 apartments and office on 7 levels. We have adopted a flat slab scheme for the project. All the columns are hidden as expected. There were a couple of transfer beams as well. We insisted on a test pile being installed based on our experience on focal point, which is next door. This led to some savings as we were able to achieve higher safe working load.





The Camelian, Lekki Blue Waters

Project Details

This is a 19-storey residential development with a multi-level car park. Also, its peculiarity comes from the general arrangement and a suspended swimming pool. This project is currently at design stage. We have been engaged to provide Civil and structural consultancy on the project.



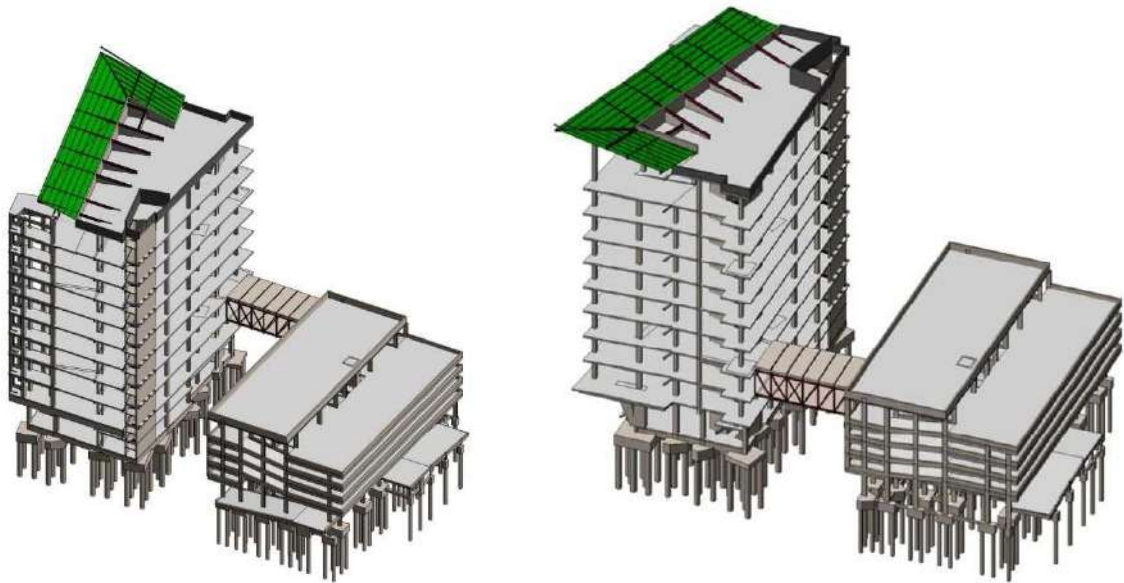
PROPOSED COBBLE STONE MALL AT KARIM IKOTUN, VICTORIA ISLAND, LAGOS

Project Details,

This project is a 10-storey mixed used commercial centre with a shopping mall and office spaces. It also constitutes a multi-level parking and a sky bridge. We adopted a flat slab scheme due to the functional use and its peculiarity. This project is at tender stage.



ARCHITECTURAL IMPRESSION



REVIT STRUCTURAL MODEL

Client: CobbleStone Properties

Construction value: Undisclosed

Architect: Baron Architects

Status: Tender Stage

MIXED -USE DEVELOPMENT AT SHORELINE ESTATE (ONIKOYI), IKOYI, LAGOS.

Project Details

This mixed used development consists of 10 apartments and office on 5 levels. We ensured that blade columns were used all through the building so all the columns were all hidden. In addition to this, we had quite several transfer systems to meet the architectural intent. The reinforced concrete building is supported on piles.



Client: Mr. & Mrs. Seyi Oladapo

Construction value: N1.3 billion

Architect:SI.SA

Status: 60%

PROPOSED DEVELOPMENT FOR PARKWALK PROPERTIES, ONIKOYI (SHORELINE ESTATE), IKOYI.

Project Details

The project consists of a three-storey building made of two wings. The elements of this reinforced concrete building were optimized in terms of sizing to reduce the dead weight of the building. This reduced the number of piles drastically compared to the initial design that was carried out by another consultant. Also, this structure is unique with large span cantilevers of 5m (see pictures below)

Client: Park walk Properties

Architect: SI.SA

Construction value: N900 million

Status: 60% complete



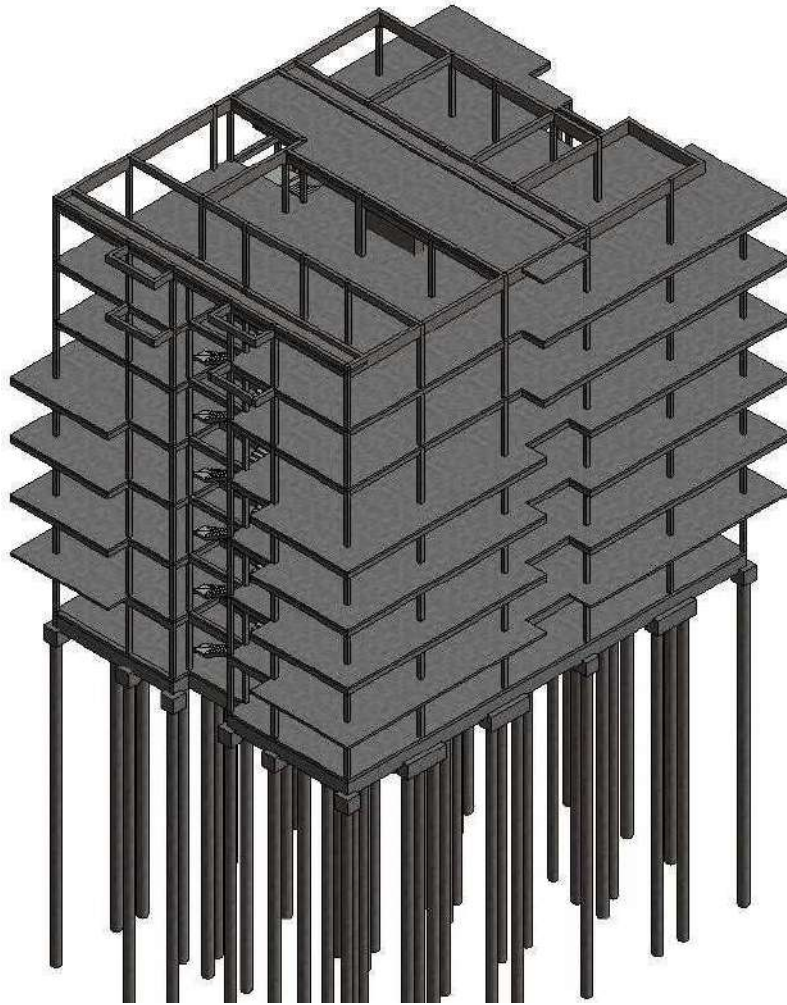


OSBOURNE FORT CLÁSICO; OSBOURNE IKOYI, LAGOS

Project Details

This is a 6-storey building including a pent floor, the project is currently at design stage where we are the structural engineering consultant. The project consists of 18 units of two-bedroom apartments, two three-bedroom apartment and a facility management office on the ground floor. It has amenities such as car lots on the ground floor, an elevator, one main and two escape stairs and a deck lounge.





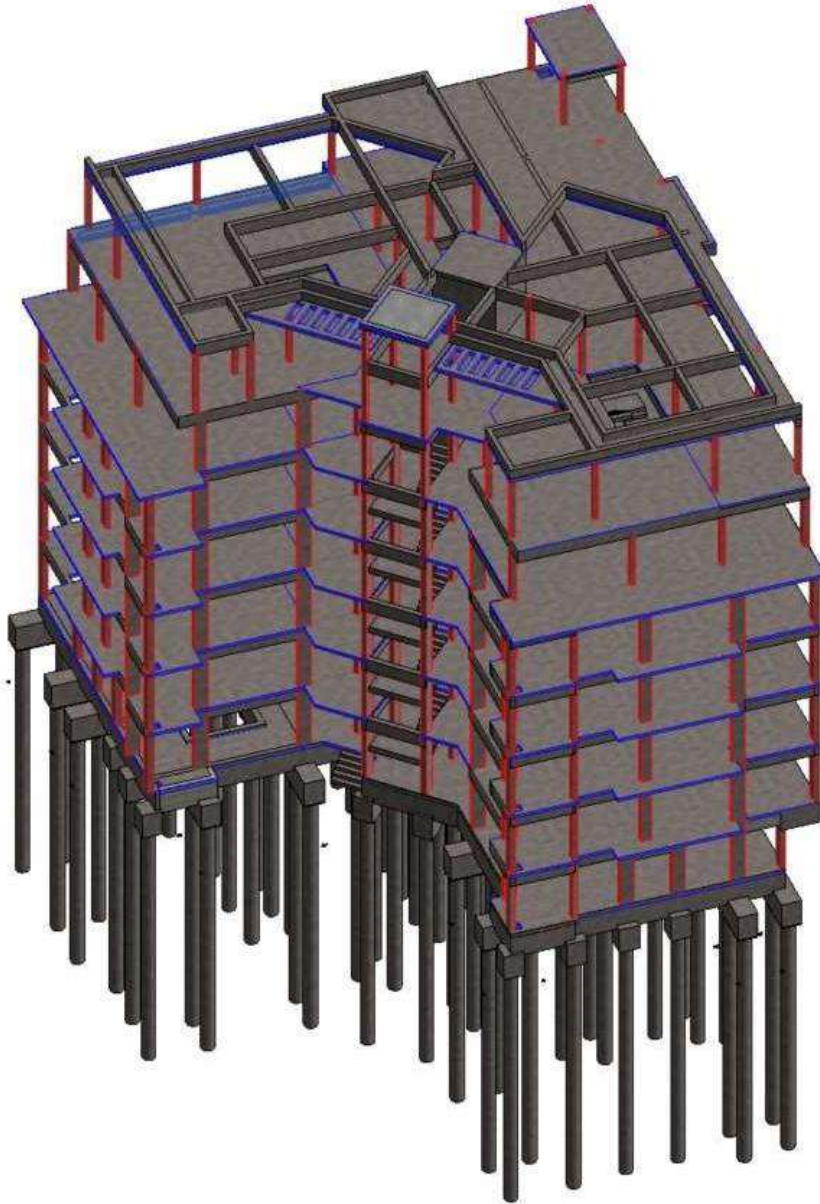
REVIT MODEL OF OSBOURNE FORT CLÁSICO- (Planning Permit being processed).

PROPOSED RESIDENTIAL DEVELOPMENT AT PLOT J8, BANANA ISLAND.

Project Details

This is a 7-storey residential development at Banana Island estate which is supported on pile foundation. The design philosophy adopted for this project is a flat slab scheme with perimeter beam.





STRUCTURAL REVIT MODEL OF J8

Client: Undisclosed

Architect: Folz Architects

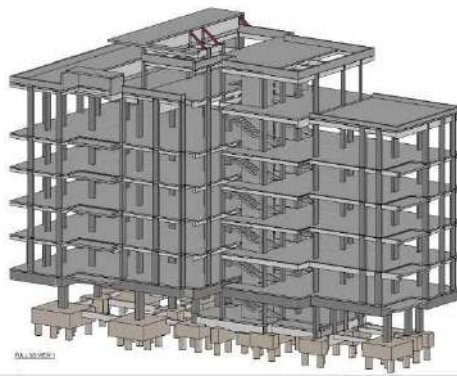
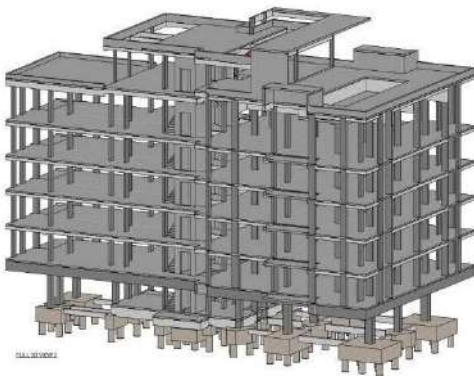
Construction value: Undisclosed

Status: Piling Ongoing

PROPOSED RESIDENTIAL DEVELOPMENT AT KOFO ABAYOMI STREET, VICTORIA ISLAND, LAGOS.

Project Details

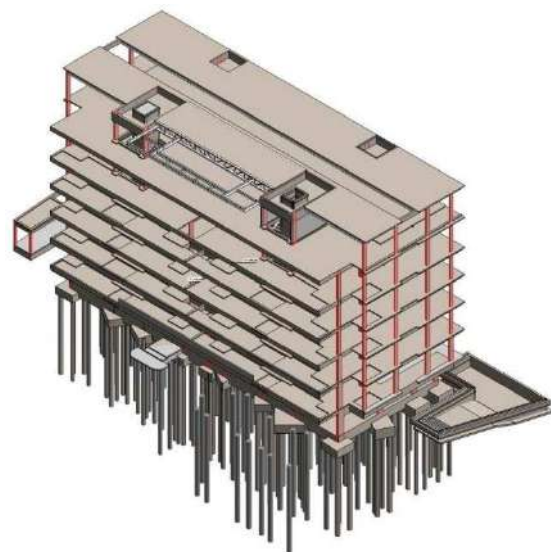
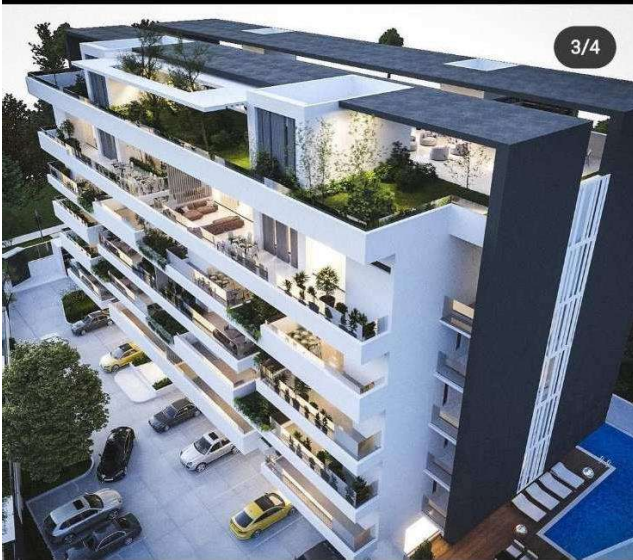
This is a residential development currenting under construction. It has several large, spanned cantilever beams with average length of 5m. The entire six floors above the first floor are supported by the transfer beams at first floor level. Also, remarkable to mention that is the suspended swimming pool at the sixth-floor level.



PROPOSED RESIDENTIAL DEVELOPMENT ALONG REEVES ROAD, IKOYI.

Project Details

This is a 7-storey residential development on Reeves Road, Ikoyi. This project consists of large, spanned cantilevers across the floor levels and, the roof is supported on a steel roof truss.



STRUCTURAL REVIT MODEL OF REEVESHIRE

Client: Transcorn Trading Company

Construction value: Undisclosed

Architect: Baron Architects

Status ;70% Complete

RESIDENTIAL DEVELOPMENT, MEKUNWEN (OPPOSITE CORONA SCHOOL), IKOYI, LAGOS,

This project consists of 3 terrace houses and a maisonette on the 3rd and 4th levels. The building has large cantilevers at the back and the front of the building.

The key structural engineering features of this building are:

- Large cantilevers in front and back of the building
- Hidden transfer beams supporting columns which were achieved without mePssing the Architectural intent.



Client: Mr Yemi Adunola
Value: N900 million

Architect: SI.SA Architects Construction
Status: 80% Complete -Finishes being done

The Tiffany, Residential Development, Lekki 1

This project consists of 4 storeys building with marionettes and flats

- Transfer systems at first floor to make the car park effective.



Client: SKO Construction

Construction value: Undisclosed

Architect: Idlewood

Status: 75%

Nova base Lekki, Beside Chrisland , Lekki Phase 1

This project consists of 8 blocks of 4 storey buildings. Each block has 16 apartments so there are 160 apartments in total.

The key structural engineering features of this building are:

- 500mm thick mat in place of the conventional raft beam and slab. This cut down the construction time of the foundation to 3days (from blinding to concrete pour) for the foundation
- The large spans achieved at ground level with the use of transfer beams





Client: Undisclosed

Architect: FOLZ

Construction value: N2.8 Billion

Status: 100% Complete

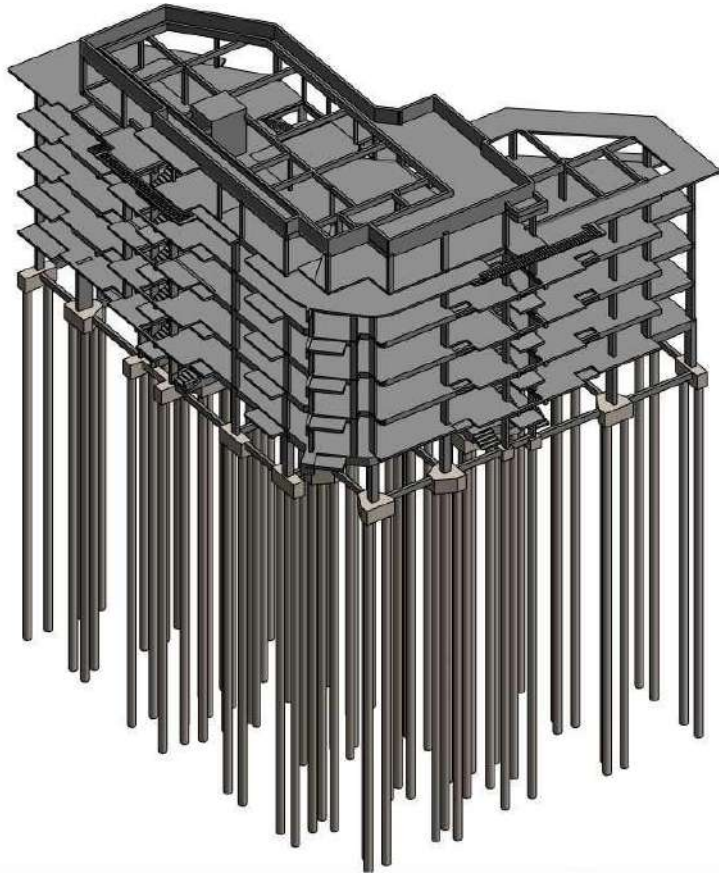
AXIS APPARTMENT AT PERIWINKLE ESTATE, IKOYI

Project Details

This a five-storey residential development including a pent floor. This project is currently in construction stage. Due to the general arrangement of each floor which are unique, a flat slab was more suiting for a safe and economic structure. Also, this building is supported on a piled foundation. It currently at 60% of completion







REVIT MODEL OF AXIS APARTMENT



AXIS APARTMENT

Client: Czera
limited

Architect: ARCHITOUCH CONSULT

Construction value: N1.8 billion

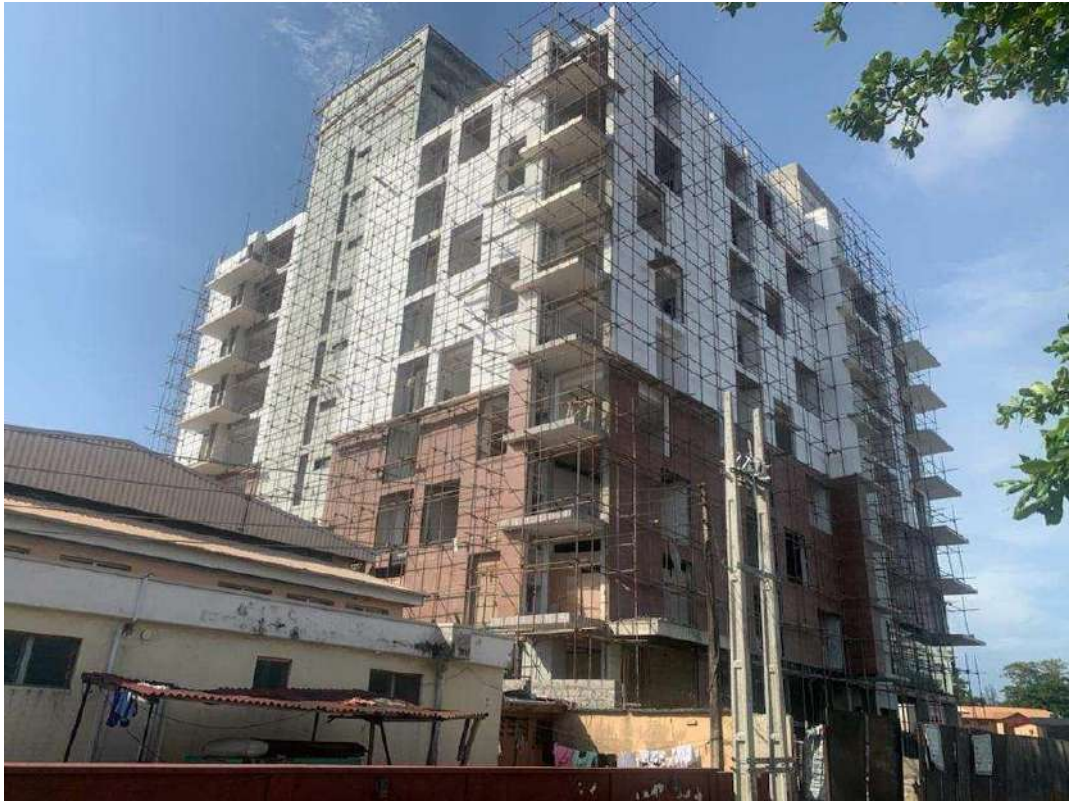
STATUS :100%

THE OVERLOOK CONDOMINIUMS AT OKOTIE-BOH STREET, IKOYI

Project Details

This is a 7-storey residential development at Okotie-Eboh Street, Ikoyi. This project was initially a beam and slab scheme which we were engaged on by Business Contracting Limited (BCL) for value engineering having bided for the project. We conducted the value engineering by changing the scheme to a flat slab. This resulting in savings on the project and BCL wining the bid. The project is 70% completion stage.





KEFFI SUITES AT KEFFI STREET, IKOYI

Project Details

This is an ongoing project of six storeys buildings comprising of 4 blocks of flats. The buildings are supported on pile foundations.

Client: Undisclosed

Architect: FOLZ

Construction value: N2.5 Billion

Status: 100% Complete





Residential Development on Udi Street, Osborne Foreshore, Ikoyi

Project Details

This a luxurious residential development with large, spanned cantilevers. Design philosophy adopted for this structure is that of steel and reinforced concrete structural members to suit the architectural and project uniqueness.





**Client: Banwolit
UCA Architects**

Architect: SPS S/AFRICA. &

Construction value: Undisclosed

Status :100% Complete

ERIN OF TURNBULL, TURNBULL AVENUE, IKOYI, LAGOS.

Project Details

This is a two-storey building with a mezzanine floor. It has a very high headroom at ground level. It also has several large cantilevers about 6.5m in the gym house and 3.5-4m around the house.







Client: Mr Jameel Disu

Architect: Baron Architects

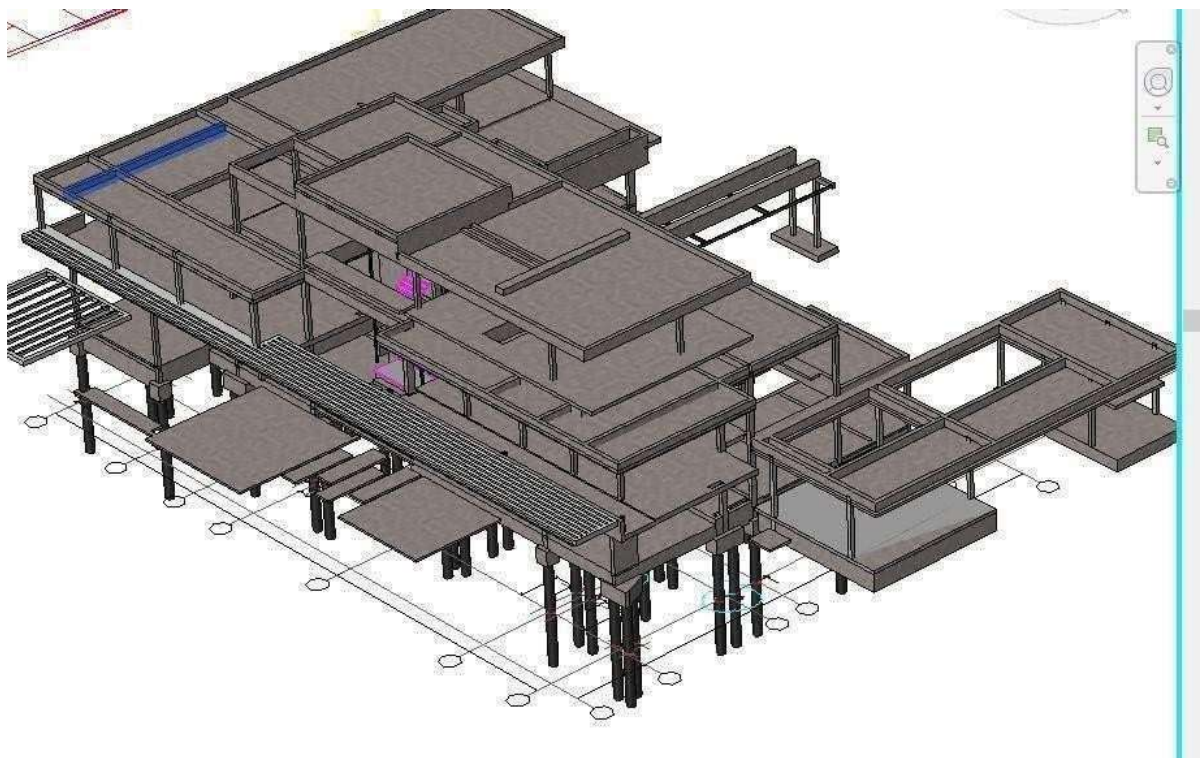
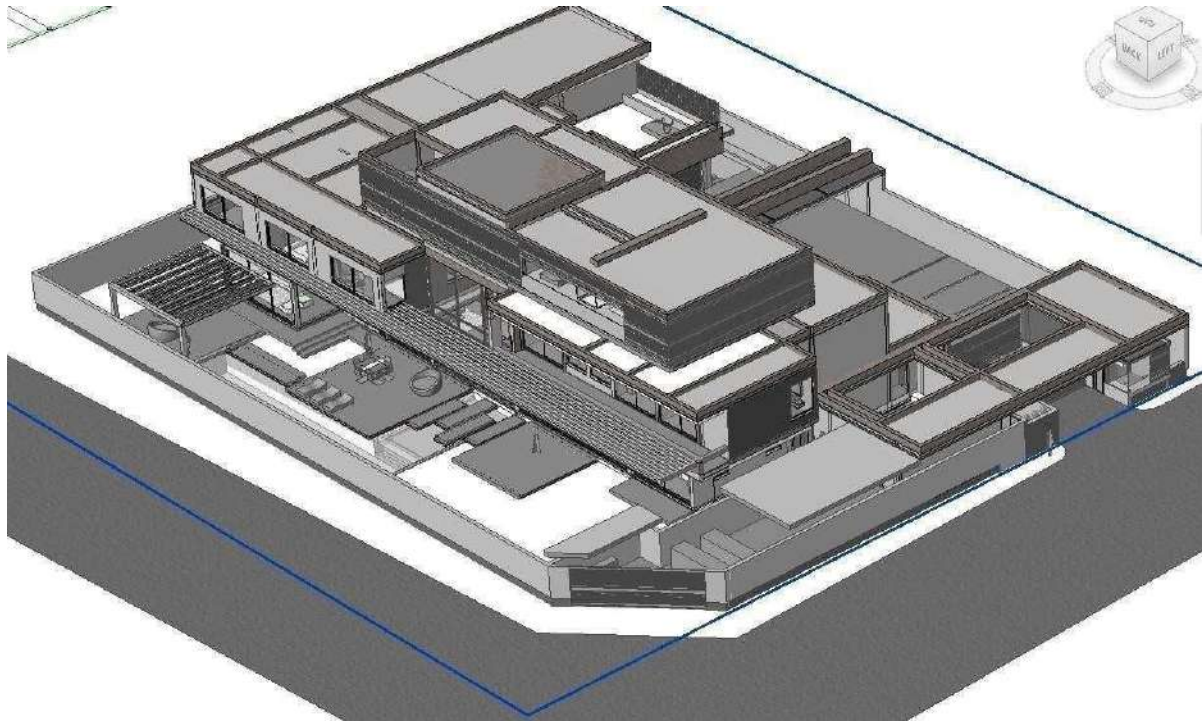
Construction value: Undisclosed

Status: 100% Complete

N-INUPA, INUPA DRIVE, IKOYI, LAGOS

This is a two-storey building with a mezzanine floor. It has a very 4m high headroom and a very interesting staircase supported from the roof. It also has several large cantilevers around the house.



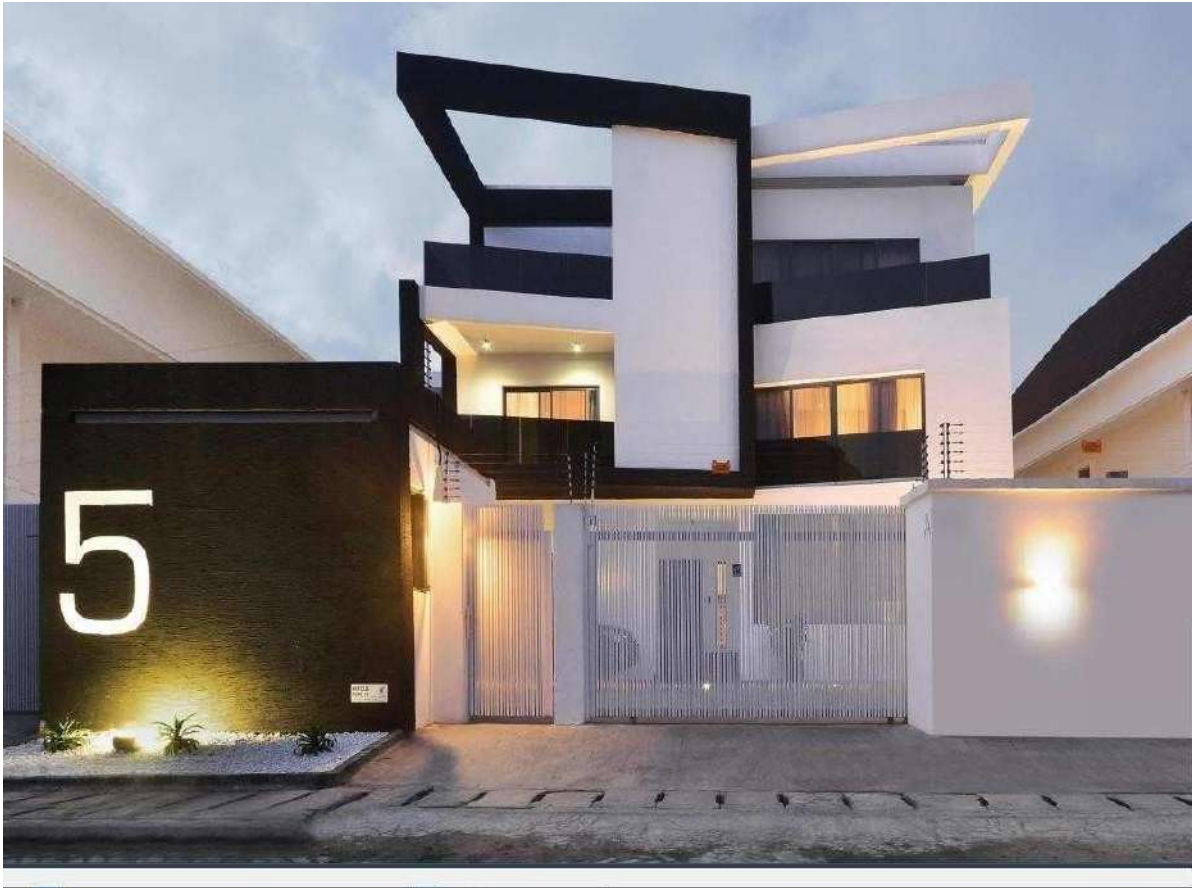


Client : BRF

Architect :SAOTA /SI.SA

Construction value : N1billion

Status: Completed



Images of Completed Residential Building for Mr & Mrs Oladapo at No.5 Gbenga Ashafa Street, Park View.

Client: Mr & Mrs Oladapo

Architect: Brown Inq

Construction value: N500 million

Status: Completed in 2013



Image of Completed Residential Building for Mr & Mrs Ogunbiyi on Manuwa Close off Keffi Road (Project Cost =N300m)

Client: Mr. & Mrs. Ogunbiyi

Architect: Brown Inq

Construction value: N300 million

Status: Completed in 2015

Private Residence at 3A, Maroko Drive off Inupa sLagos.





Client: Dr.Ishaga

Architect: Studio-Ola

Construction value: N450 million

Status: Completed

Fidap Villa, Reeve Road, Ikoyi

The project consists of luxury residential development comprising a main building, swimming pool and gymnasium. The main building has a footprint larger than 1300mm².

We used a flat slab scheme for the foundation except at the perimeter where we had ground beams. This made construction works faster.







Client: Fidap Energy

Construction value: N1 billion

Architect: Baron Architects

Status: 98% Complete

Luxury Block of Flats, Lugard Avenue, Ikoyi (Adjacent George hotel)

This project consists of 4 blocks of 5 storey buildings.

The key structural engineering features of this building are:

- The large spans achieved at ground level with the use of transfer beams otherwise the car park would have not been effective.
- The reinforced concrete building is supported on piles



Client: Chisco Group

Construction value: N2.5billion

Architect: Detailed Designs

Status: 100% Complete

Luxury Block of Flats, Bourdillon Road, Ikoyi

This project consists of 4 blocks of 5 storey buildings.

The key structural engineering features of this building are:

- The large spans achieved at ground level with the use of transfer beams
- The building is supported on piles



Client: Chisco Group



Architect: Detailed Designs

Construction value: N2.5Billion Status: 100% Complete

FAP Software

All our technical staff are proficient in the latest design and drafting packages and our structural/civil designers use the latest versions of various design and drafting packages including ProtaStructure, CSC fastrak, Tekla Tedds, Tekla Structural Designer, CSI safe, CSI Etabs, Sofistik package, Sap 2000, Prokon, Autodesk Robot Structural Analysis, and Autodesk AutoCAD Civil 3D and Cads RC, Autodesk Revit Structure.

The use of Autodesk Revit Structure for drafting incorporates a complete 3D modelling along with all the associated technical information produced from one platform. This enables easy, adequate, and complete coordination with the architect.

"The expertise and experience within our company will guarantee the provision of innovative & elegant design solutions."

We offer a **complete design service** from "Concept to Completion" to our clients which allows continuity in economic design and efficiency in providing solutions for the benefit of our clients in the current market.

HEALTH & SAFETY POLICY

FAP considers health, safety, health, and welfare at work (SHWW) to be of primary significance in all our work and our designs. We have endeavoured to create a humane organization, where people matter, and health and safety matters always take priority.

This not only applies to our own employees, but also to other architects, engineers, contractors, and clients to whom we provide our professional services. It is not our intention to assume that SHWW issues are a nuisance or imposition on a project but that they form an integral part to our design solutions and to our management procedures, throughout the course of all works and onto the use of the products being specified.

It is our policy to provide adequate time and resources to:

- Ensure, so far as is reasonably practicable, the safety, health, and welfare at work of all employees including temporary and contract staff and of other persons affected by our actions.
- Provide such Safety, Health & Welfare at Work training, specialist advice, information, instruction, and supervision as may be necessary to personnel at all levels in our organization.
- Provide a means of consultations on safety, health and welfare at work matters for all employees and other persons who may be affected by their acts or omissions.
- Keep the measures taken to promote safety, health, and welfare at work under regular review.
- Integrate safety, health, and welfare at work considerations into our design and our business decisions

QUALITY ASURANCE POLICY

To deliver a cost-efficient quality product, our company aims to:

- Meet the needs of our clients by providing services of recognized value.
- Seek continued enhancement of our performance through improved processes.
- Create conditions where people of high abilities are attracted to work in the company
- Develop and establish programme of continual improvement for all employees
- Achieve in-house delivery of company's knowledge and skills through the provision of networks, supported by appropriate training and facilities
- Maintain honour and mutual respect in relationships with clients, members of the company and collaborators.
- Put in place the road map to achieving the current quality management international standard BS EN ISO 9001: entitled "Quality Management Systems-Requirements".

In meeting these objectives, the company will:

- Deliver projects which are recognized for their quality.
- Provide opportunities for staff to develop rewarding careers and achieve performance which will sustain the long-term success of the business
- Set measurable targets for all staff.
- Monitor our performance in complying with this policy

RC 912960



CORPORATE AFFAIRS COMMISSION
FEDERAL REPUBLIC OF NIGERIA

Certificate of Incorporation

I hereby certify that

FAP CONSULTING ENGINEERS LIMITED

*is this day incorporated under the COMPANIES AND ALLIED MATTERS
ACT 1990 and that the Company is Limited By Shares.*

*Given under my hand at Abuja this Twenty-Third day of
September, 2010*




BELLO MAHMUD

Registrar - General

377451

CS Scanned with CamScanner



IT PAYS TO PAY TAX
IKEJA INTEGRATED TAX OFFICE
80, Allen Avenue, Ikeja, P.M.B. 21092, Ikeja, Lagos. www.firs.gov.ng
Telephone: (01) - 8504411, 7929655, 8501149

TIN: 11675874-0001/IKV10

2nd Dec. 2011

Our Ref No: _____

Date: _____

The Managing Director,

FAP CONSULTING ENGINEERS LIMITED

NO 10 OMOTAYO OJO STREE,

OFF ALLEN AVENUE, IKEJA

LAGOS.

Dear Sir,

**VALUE ADDED TAX ACT NO.102 OF 1993
REGISTRATION OF VATABLE PERSONS/TAX IDENTIFICATION NUMBER**

Further to your submission of registration forms for the above, please be informed that your Tax Identification Number as a collection agent is:

TIN: 11675874-0001/IKV10

Please quote this number on all your correspondence with this office and also on your sales invoices. This notice is not a VAT Certificate. It is given provisionally pending the issuance of VAT Certificate, which is currently under process.

Yours faithfully,

OREBAJO, T.A.
Asst. Director /Tax Controller

HUMAN RESOURCES

FAP Consulting currently employs 17 full-time technical staff at our Ikoyi **office**. We have two clerical/administrative staff members and we also employ additional part-time technical staff as project demand requires.

CONTACT US

FAP Consulting Engineers,

40b, Isale Eko Avenue, Dolphin Estate,

Ikoyi,

Lagos.

Tel: +234 (0) 80123245279, (0) 8066208974, 01-8944235

Email: office@fapconsult.com

LIST OF STAFF-FAP CONSULTING

	NAMES	DESIGNATION	QUALIFICATIONS
1	ADETUNJI FASHANU	MANAGING PARTNER	B.sc ,MNSE,COREN
2	ADENIYI OSINOWO	PARTNER	B.sc ,M.Sc,MNSE,COREN
3	CHUKWUMA MBACHU	PARTNER	B.sc ,MNSE,COREN
4	ADETUNJI ADEYEMOH	SENIOR ENGINEER	B.sc ,MNSE,COREN
5	MICHAEL OLAREWAJU	SENIOR ENGINEER	B.sc ,MNSE,COREN
6	MURTALA ISSA	SENIOR ENGINEER	B.sc ,MNSE,COREN
7	ADEBAYO ADEDAYO	SENIOR ENGINEER	B.sc ,MNSE
8	OLUWADAMILARE ADESHINA	SENIOR ENGINEER	B.sc ,MNSE,COREN
9	MURTALA AROWOLO	SENIOR ENGINEER	B.sc ,MNSE
10	PHILIP SHOBOWALE	TECHNICIAN	S.S.C.E
11	LEMMY OJO	TECHNICIAN	S.S.C.E
12	TUNDE AKINSANYA	SECRETARY	HND
13	ADEWALE OLWALE	ACCOUNTANT	HND

ADETUNJI FASHANU

No. 40B, Isaale Eko, Dolphin Estate, Lagos State.

Career Objective

Adetunji Fashanu is a Partner with FAP Consultant Limited with responsibility for managing the design of medium to high rise buildings. Prior to joining FAP, he had Worked with Morgan Omonitan & Abe Ltd and Ove Arup Nigeria. He has special interest and competence in the design of high rise buildings in both concrete and structural steel. He is also versatile in the use of a number of current design software including Revit .

Work Experience

FAP Consulting Engineers Ltd.

2019– Till date

No. 40B, Isaale Eko, Dolphin Estate, Lagos State. Engineering Department

Projects

- Designed a Seven (7) storey Car Park for Central Bank of Nigeria(CBN).
- Designed a twenty-one (21) storey building for Central Bank(CBN).
- Designed a fifteen (15) storey building for FADCO investment Limited on Ligali Ayorinde, Victoria Island, Lagos.
- Member of the design team for five storey building for Nigerian International Bank (Citi-Bank) at Victoria Island.
- Lead designer for a 15-storey building for Jovis Nigeria Ltd on Ozumba Mbadiwe, Victoria Island, Lagos.
- Lead designer on a 10-storey building on Alfred Rewane for African Capital alliance (ACA).
- Lead designer on 6-storey Car Park for Zenith Bank Plc.
- Lead designer on Marriot Hotel, Ikeja, Lagos (9 suspended floors)
- Lead designer Marriot Hotel, Victoria Island, Lagos (9 suspended floors).
- Lead designer for the 22-storey Hilton Hotel, Ikoyi
- Member of the design team for Fourteen (14) storey building for Zenith Bank Plc Abuja.

- Lead Designer for the 10,000-seater Auditorium for Carpenter’s Church Port-Harcourt with a unique space truss spanning over 90m by 60m.
- Lead Designer for the 8000-seater Auditorium for Redeemed Christian.
- Lead Designer Church of God (City of David) with a unique space truss spanning over 60m by 60m.
- Redesigned and Supervised amendments to Study Centre Surulere, Lagos
- Carrying out technical assessment of works to be done based on request from the client.
- Preparing draft site drawings and project
- Drawings (structural and civil works) using appropriate tools.
- Preparing the scope of work assessed in accordance with internationally accepted standards and specifications.
- Preparing the relevant bill of quantity when required
- Carrying out routine supervision of construction sites and following up on outstanding projects
- Preparing weekly and daily report of activities on projects handled.
- Attending co-ordination meetings and site meetings.
- Member of the design team of a 10-storey building for a commercial bank.
- Member of the design team for the new domestic terminal of the Muritala Mohammed Airport consisting of a terminal building and a multi-storey car park.
- Member of design team for a shopping mall, (one of the largest shopping mall in West Africa).
- Member of the Design Team for a finance Building, Adeola Odeku Victoria Island, Lagos.
- Designed a 5-storey residential building for Agro –Allied Consultants.
- Designed and supervised offices and residences for Kuramo Development Trust at Oniru Estate, Lekki –Lagos.
- Designed and supervised schools.

National Youth Service Corps (NYSC)

2003

(YOUTH CORPER)

Duties:

- ✓ Member of the engineering team that supervised the maintenance of Umuahia, Abia State
- ✓ Member of the engineering team that supervised the renovation of Abia State Secretariat
- ✓ Structural design of buildings with QuickCivilCAD.

Educational Qualifications

2001 University of Ibadan, Ibadan, Oyo State.

Bachelor of Engineering (B.Eng.), Civil Engineering.

Professional Affiliations

- Corporate Member of Nigeria Society of Engineers (MNSE).
- Council for the Regulations of Engineering in Nigeria (COREN)

Additional Skills

- Computer literate and proficient in the use of Microsoft Office Suites (Word, Excel, PowerPoint, and Project)
- Professional in the use of AutoCAD, ORION, PROTA, CAD RC, and Revit Structure for structural designs.
- Ability to read and interpret structural and architectural drawings.



ESTABLISHED BY ENGINEERS (REGISTRATION ETC) DECREE 55 OF 1970
AND AS AMENDED BY DECREE 27 OF 1992, NOW ACT CAP EII/2004

*The Council for the
Regulation of Engineering in Nigeria*

ANNUAL PRACTISING LICENCE (PERSONNEL)



This is to certify that

Engr. T., A. Fasbanu (R14877)

*has met all the requirements contained in the **COREN** Act
and has been duly licensed to practise engineering in Nigeria.*

The Certificate expires on the 31st. of December 2022

A handwritten signature in blue ink, appearing to read "Joseph O. Odigure". The signature is stylized with a large, sweeping flourish at the end.

Engr. Prof. Joseph O. Odigure
REGISTRAR

University of Ibadan



Taofik Tunji Fasahun

having fulfilled all the requirements of the University
and passed the prescribed examinations has this
day been admitted to the degree of

Bachelor of Science
in

Civil Engineering
with Second Class Honours (Upper Division)

Matric. No. 82633

Dele Fabek

VICE-CHANCELLOR

September 24, 2001

Wuyi Taiji

REGISTRAR

SUNDAYOSINOWO

KEY DATA:

Sunday Adeniyi is a Partner with FAP Consulting. He has been involved in designs and construction supervisions of some specific projects such as residential, commercial, industrial projects in reinforced concrete and structural steel works.

He has wide knowledge in Civil/Structural Engineering Design and possesses competent technical skills in Construction Supervision

PERSONAL DATA:

- Profession: Civil/Structural Engineer
- Position: Project Engineer
- Date of Birth: 1981
- Sex: Male
- Marital Status: Married
- Nationality: Nigerian

Qualifications: M.Eng. (Structural Engineering)

P.G.D (Civil Engineering)

H.N.D (Civil Engineering)



WORK EXPERIENCE

FAP Consulting Engineers Limited 2017 - Till date

Core Responsibilities

- Structural Design of Reinforced Concrete Church and Mosque
- Building of CBN, Abuja.
- Structural Design of Reinforced Concrete Duplex (5units),Gym House And Swimming Pool at Osborne Fore Shore Estate, Ikoyi, Lagos State.
- Structural Design of 5 Storey Reinforced Concrete Hospital Building (With a Basement and a Steel Roof), Mortuary and Utility Building at The African Cancer Cebtre, Okorisan, Epe, Lagos State
- Structural Design of Reinforced Concrete 3 Storey Executive Flats, Workshop, 3 Storey Engineer's Apartment and Sport Arena on Raft and Pad Foundations.
- Structural Design of Residential Blocks for Pa A. O. Shinubi Estate Mary Land, Lagos.
- Construction of 10 incubation classrooms in Lafia and Makurdi, and several other buildings.
- Member of Structural Integrity Design Check Team on Fire Invaded Zenon Building at Ajose Adeogun, Victoria Island, Lagos State.
- Structural Design of Peacekeeping Station, Ikorin

- Successfully completed the backfilling of 7m deep washout that cut-off Nyanya from Gbagalape with boulders graded from 500mm to 0/50 and the road was made motorable within two months.
- Structural Design of (12m X 4m) Reinforced Concrete Underground Storage Tank for Water and Diesel
- Structural Design and Construction Supervision of Dove Court Estate:
 1. Sewage Treatment Plant on Pile Foundation
 2. Storey Messonete Building (5units) on Pile Foundation
 3. Water Treatment Plant Building & Generator House on Pile Foundation

Mmamine Konsult Limited,

2006 - 2009

12, Abia Street, Yelwa Tudu, Bauchi, Bauchi State.

Civil Engineering Graduate Trainee

Core Responsibilities

- Structural Design of 4 Storey Hotel Building, Swimming Pool, a Storey Sport Arena , 3 Storey Bar and Restaurant Building and 3 Storey Hotel Building.
- Five Bedroom Duplex for Lithosphere Architects, Bauchi State.
- Four Bedroom Duplex for Lithosphere Architects, Bauchi State.
- Accident and Emergency Building for Gombe State Government, Gombe State.
- Two Storey Administrative Block and Assembly –all for Peniel International Schools, Karu L.G.A., Nasarawa State.

NYSC

2004 - 2005

- **Nembe LGA , Bayelsa State
(YOUTH CORPER)**

Duties:

- Responsible for the supervision of concrete road network at Bassambiri, Nembe Local Government, Bayelsa State.

- **Internship (Industrial Trainee)
Dellatre Bezon Nigeria Ltd**

2000 - 2001

Duties

- An Industrial Trainee Engineer responsible for construction, supervision in the following projects.
- Construction supervision of Utility building and on-shore/offshore driving and casting of concrete piles.
- Supervision of Ijede Community –all renovation

PROFESSIONAL QUALIFICATIONS:

- Corporate Member Nigerian Society of Engineers (MNSE).
- Registered Engineer (COREN

SKILLS:

- AutoCAD, ORION and Revit Structure
- Microsoft Office Suites (Word, Excel, PowerPoint and Project)

HOBBIES:

- Football

REFEREES:

Available on request.



021178

ESTABLISHED BY ENGINEERS (REGISTRATION ETC) DECREE 55 OF 1970
AND AS AMENDED BY DECREE 27 OF 1992, NOW ACT CAP EII/2004

The Council for the Regulation of Engineering in Nigeria

This is to certify that

Adeniyi Abiodun Osinowo

has been duly Registered by
the Council for the Regulation of Engineering in Nigeria,
and is hereby authorised to practise
within the Federal Republic of Nigeria as

Civil Engineer

(R. 28,188)

and to use before his/her name the designation



Dated 26th day of June 20 14

REGISTRAR

PRESIDENT



*This certificate is the property of the Council and it is valid
only for so long as the holder's name remains on the Register.*

ABUBAKAR TAFAWA BALEWA UNIVERSITY
BAUCHI, NIGERIA



This is to certify that

Osinowo Adeniyi Abiodun

having completed an approved course of study and passed all the prescribed examinations has, under the authority of Senate, been awarded **Postgraduate Diploma in Civil Engineering**

with **Upper Credit** in the **2006/07** session




Vice - Chancellor


Registrar

Date **7th May, 2009**

No. 014041

THE FEDERAL UNIVERSITY



OF TECHNOLOGY, AKURE

000383

Be it Known that

Adeniyi Abiodun Osinowo

*having satisfied in full, the requirements for
the degree of*

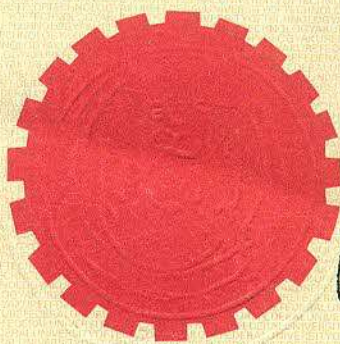
Master of Engineering

in

Structural Engineering

*has been admitted to that degree with all rights, privileges and
honours appertaining thereunto, in witness whereof the seal of
the University and the signatures authorised by the Senate
of the University are affixed below on this*

25th *day of* **June 2014**



G. O. Olorunsola
Vice-Chancellor



M. O. Ogun
Registrar



CHUKWUMA MBACHU

STRUCTURAL ENGINEER

Chukwuma possesses broad experience in Structural Design, Supervision and Integrity survey of structures ranging from High-rise buildings to residential and Industrial projects. He is a member of the Nigerian Society of Engineers (NSE) and the Council for Regulation of Engineering in Nigeria (**COREN**) and American Society of Civil Engineers (**ASCE**).

EXPERIENCE

01 PARTNER **FAP CONSULTING.**

2017 – Present

Fully accountable for Design, Construction Supervision and Integrity Survey of structures ranging from high-rise buildings to residential, industrial and commercial projects. Leveraging industry knowledge in collaboration with project teams and engineering disciplines to provide structural engineering support for various onshore and offshore facilities.

Key projects & Impact so far:

- Purple Capital Development - Proposed 10-storey Mixed Use Development at Freedom Way, Lekki, Lagos – Provision of Multidisciplinary Engineering QA/QC Consultancy services to the contractor.
- Association of Tourist Boat Operators and Water Transporters of Nigeria (ATBOWATON) - Proposed Development of Commando Ferry Terminal & Jetty, Badagry LGA, Lagos State
- Structural Engineering Design of the 6-storey office complex (Piers Place), 14 Montgomery, Yaba, Lagos.
- Nigeria Institute of Oceanography and Marine Research (NIOMR) - Structural Assessment of Existing Jetty at Wilmot Point Road, Victoria Island Lagos.
- Structural Engineering Design of the Proposed Jesuit Chapel, Jesuit College, Port-Harcourt, Nigeria.
- Structural Design Audit of the West African Examination Council (WAEC) Human Resources building.
- Structural Design of a 6-storey Commercial Development at Yaba, Lagos, Nigeria.
- Structural Design of Chemical Storage Shed at Escravos for Chevron Nigeria Ltd.
- Structural Engineering Designs for all facilities within Salt Village, Apapa, Lagos for Dangote group.
- Structural Integrity Assessment of Grandstands at Tafawa Balewa for Eclipse Live Africa.
- Structural Design and Supervision of Proposed 4-Storey Office Development for RSGD Ventures along Cocoa Road, Ikeja Industrial Estate, Lagos.
- Structural Design of Proposed 6-Storey Office Complex for Mikeade Property Development Company Ltd. Along Opebi/Allen rd. Ikeja Lagos

COMPETENCIES

AUTODESK REVIT

AUTOCAD

CSC ORION

STAAD PRO

TEKLA
STRUCTURAL
DESIGNER

MICROSOFT
OFFICE SUITE

MICROSOFT
PROJECT

CSI ETABS

SAP 2000

CSI SAFE

02 PRINCIPAL ENGINEER **Ove Arup & Partners Nigeria Ltd.**

2016 – 2017

Led and facilitated multiple projects requiring structural engineering design, work plan development, data collection/analysis and preparation of technical memoranda, reports and presentation for practices. Maximized project productivity by using Autodesk REVIT and other software for design coordination and documentation while always ensuring project compliance with local, state and federal regulations.

Key projects & Impact:

- Lead Design Engineer – Proposed 10-storey First Shared Services Facility, Ogun State for First Bank Nigeria
- Port Harcourt Refining Company Ltd – Structural Integrity Check of PHRC Jetty Structures and Dolphine in Port Harcourt, Rivers State.
- Led the structural Engineering Team in the Condition Survey of the 20-storey Freeman House, Lagos Island, Lagos.
- Led the engineering team for the Independent Structural Assessment of an Office/Accommodation Building at Oniru, Victoria Island, Lagos for Total E&P Nigeria Staff Multi-Purpose Co-Operative Society Limited
- Seplat Petroleum Development Company Plc – Structural Integrity Assessment and Re-design of Cargo Berth Jetties 1 and 2 at Warri Refining and Petrochemical Company Ltd (WRPC).
- Managed Structural Engineering efforts for the Modification of Citibank Nigeria Ikeja and Port-Harcourt branches.
- Led Structural Pump foundations verification for Gramen Petroserve Nigeria Limited.
- Supervised the Structural Assessment of an Office/Accommodation Building at Oniru, Victoria Island, Lagos for Total E&P Nigeria Staff Multi-Purpose Co-Operative Society Limited
- Led the Structural Engineering Team in the design and supervision of the 3-Storey Zenith Bank, Ademola Adetokunbo, FCT, Abuja Branch



03 SENIOR ENGINEER

Ove Arup & Partners Nigeria Ltd.

2014 – 2016

Provided structural evaluations, design services and rehabilitation guidance while contributing to proposals; determine daily, monthly and yearly project schedules; estimate pre-project equipment and labor; produce monthly progress reports for client.

Key projects:

- Design Engineer – Structural Design of the 25-storey Transcorp Hilton Hotel at Ikoyi, Victoria Island
- Lead Engineer -Structural Design Check of CBC Towers, Lekki, Lagos
- Lead Engineer – Structural Assessment of an Existing Tower Base at a BTS Site (AN0414) in Anambra State for Egypro Nigeria Limited
- Lead Engineer – Structural Investigation of the Catholic Church of Presentation Existing Building at Festac, Lagos
- Lead Engineer – Structural Audit of Collapsed Mast at Citibank Idumota Branch
- Lead Engineer – Structural Audit and Re-design of Existing Mast at Citibank Headquarters, Kofo Abayomi, Victoria Island
- Field Engineer – Structural Survey of Benisede Flow Station for SPDC, Nigeria
- Design Engineer – Restoration of Breadfruit House, Marina, Lagos.
- Design Engineer – Structural Design of the Nissan Showroom, Victoria Island, Lagos.
- Lead Engineer – Structural Investigation of Radisson Blu Hotel, Victoria Island, Lagos.

CAREER NOTE

- **PROJECT ENGINEER**
|
- **GRADUATE ENGINEER**
Ove Arup & Partners Nigeria Ltd.
2011 – 2014
- **ENGINEER II**
Federal Capital Development Authority (FCDA)
2009 – 2011

TRAININGS & PROFESSIONAL DEVELOPMENT

Project Management Training | **JK Michaels consulting**
Basic Offshore Safety Induction & Emergency Training | **T-BOSIET**
Member | Nigerian Society of Engineers (**NSE**) Membership ID: **35056**
Member | Council for Regulation of Engineering in Nigeria (**COREN**) Membership ID: **R32064**
Member | American Society of Civil Engineers (**ASCE**) Membership ID: **10082731**
BSc. In Civil & Environmental Engineering | **University of Lagos**

REFERENCES

Available on request



ESTABLISHED BY ENGINEERS (REGISTRATION ETC) DECREE 55 OF 1970
AND AS AMENDED BY DECREE 27 OF 1992, NOW ACT CAP EII/2004

*The Council for the
Regulation of Engineering in Nigeria*

ANNUAL PRACTISING LICENCE (PERSONNEL)



This is to certify that

Engr. Mbachu, Chukwuma Olisa (R32064)

*has met all the requirements contained in the **COREN** Act
and has been duly licensed to practise engineering in Nigeria.*

The Certificate expires on the 31st. of December 2022

A handwritten signature in blue ink, appearing to read "Joseph O. Odigure". The signature is fluid and stylized, with a long horizontal stroke extending to the left.

Engr. Prof. Joseph O. Odigure
REGISTRAR

UNIVERSITY OF LAGOS



Chukwuna Mbachu

of

The Faculty of Engineering

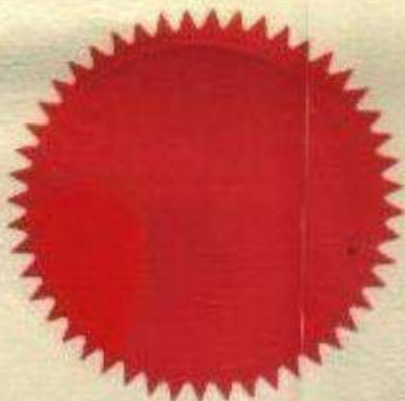
*having completed the course of study approved by the University and
satisfied all requirements for the award of a degree has on
28th November, 2008*

*been admitted by the Senate
to the degree of*

Bachelor of Science

Civil Engineering

with Second Class Honours (Lower Division)



[Signature]
Registrar

[Signature]
Vice-Chancellor

MICHAEL OLAREWAJU

CIVIL / STRUCTURAL ENGINEER

Address Lagos, Nigeria 102112

Phone +234-806-420-5398

E-mail themichaelolarewaju@gmail.com

LinkedIn [www.linkedin.com/in/michael-](http://www.linkedin.com/in/michael-olarewaju)

[olarewaju](http://www.linkedin.com/in/michael-olarewaju)

PERSONAL PROFILE

Industrious Civil / Structural Engineer with extensive experience in various types of designs, supports and foundations. Effectively collaborates with other engineers and architects. Adept at site visits and inspection procedures. Skilled in project design and management, independent research capabilities, and mathematical modelling.



Skills

Proficient in Civil Engineering Software (Autodesk AutoCAD, Tekla Structural Designer, MasterSeries, STAAD Pro, Revit Structure, Orion 18, Prota Structure) and Microsoft Office Suite

Project management skills.

Good Interpersonal and communication skills.

Excellent Team Player

Creative and analytical thinking abilities.

Ability to adapt to a dynamic work environment and conditions.

Structural engineering



Work History

Oct 2019 - Current **Civil /Structural Engineer**

FAP Consulting Engineers Limited, Lagos

- Led a design team in the design and construction of a 7-storey residential development at Osborne Phase II estate by ensuring safe and economic design to British Standard codes (BS 8110, 6399, 5950) with the use of Tekla Structural Designer
- Coordinated and managed a 3-man design team for a commercial centre remodeling at Victoria Island
- Designed End-bearing piles and pile caps for a residential development at shoreline with MasterSeries
- I engaged with clients in project deliverable through effective communications and project management skills

- Prepared Structural health monitoring report by employing visual and analytical skills analysing results of NDT conducted
- Supervised a 6-storey multipurpose building at Mekunwen Ikoyi by ensuring construction standard and meeting with the project stakeholders
- Member of assessment team that conducted structural assessment for Gloworld offices across Nigeria with the purpose of providing report for remodeling
- Member of engineering team that carried out structural integrity test on an existing building at Bourdillon
- Designed and supervised a 4-storey residential development with pile foundation at Banana Island
- Completed accurate engineering calculations for weights, loads and other metrics using both manual and digital methods.
- Traveled to build sites to collaborate with construction personnel and to confirm compliance with design parameters and regulations.

◆ **Dec 2018 - Graduate Engineer**

Oct 2019 *FAP Consulting Engineers Limited, Lagos*

- Designed a 2-storey residential development at St Annas Port Harcourt
- I engaged in Project Design Coordination with other design team and architects
- Understudying Design Methodology and Project Management
- Worked closely with engineers and assisted with Non-Destructive testing of structures.
- Collaborated with senior engineers on projects and offered insight.

◆ **Dec 2016 - Intern**

Apr 2017 *Nexant Consulting LLP*

- Project Management: I Kept track and maintained record of activities on site for progress report (Lagos-Badagry Expansion Project)
- Quality assurance: I ensured various field tests (Dynamic Cone Penetrometer Test, Dynamic Plate Loading Test, Insitu density test, CBR Test etc.) were adequate and met required specifications
- Studying and implementing different construction methodologies to ensure project delivery.
- Sorted, organized, and maintained files.

◆ **Jun 2015 - Public Relations Officer**

Jun 2016 *Nigerian Institution of Civil Engineers, Ile-Ife*

- Maintained proactive media relations program by distributing news releases for placement, building strong relationships and monitoring media.
- Monitored and evaluated industry media coverage by managing social media platforms and contributing engaging articles to range of industry publications.
- I carried out the internal and external publicity of the association
- Forged strong media relationships to further public relations goals.



Education

◆ **Sep 2013 - Bachelor of Science: Civil Engineering**

Apr 2018 *Obafemi Awolowo University - Ile-Ife, Nigeria*

Second Class Upper Division

- Elected to Public Relations Officer for Nigerian Institute of Civil Engineers- Student Affiliate in 2015
- Professional development completed in Health Safety and Environment 1&2

◆ **Sep 2010 - N.D: Civil Engineering Technology**

Aug 2012 *Kwara State Polytechnic - Kwara, Nigeria*

Upper Division



Certifications

◆ Proficiency Certificate in Management, Nigerian Institute of Management- January 2017.

◆ Professional Certificate in Project Management, British Project Management Academy- July 2019.



Affiliations

◆ Council for the Regulation of Engineering in Nigeria (COREN); Registered Engineer

◆ Nigerian Society of Engineers (NSE); Graduate Member

◆ Nigerian Institute of Management (NIM); Graduate Member



Interests

◆ Project Design and Management

◆ Traveling

◆ Poetry



Council for the Regulation of Engineering in Nigeria

Established by Decree of 1970, Amended by Decree 27 of 1992, Now Cap E11 Engineering (Registration, Etc), (Amendment) Act, 2018

HEAD OFFICE: 22 Addis Ababa Crescent, Wuse Zone 4, P.O.Box 8461 Wuse, Abuja. Tel: 07098827873, 07088697804, 08145090579

E-mail: info@coren.gov.ng, accounts@coren.gov.ng, registration@coren.gov.ng Website:www.coren.gov.ng

PRESIDENT: Engr. Ali A. Rabi, FNSE

VICE PRESIDENT: Engr. Vernatius C. Igiri, FNSE

REGISTRAR: Engr. Prof. Adisa, A. Bello FNSE, FAEng, FNIMechE

08 September, 2022

COREN/REG/R69067

Engr. Olarewaju, Michael Olusegun

Dear Sir,

NOTIFICATION OF FULL REGISTRATION

This is to certify that you have fulfilled all the conditions prescribed by the Council for the Regulation of Engineering in Nigeria, **COREN**, as a statutory regulatory organ of government as established under the provisions of Engineers (Registration, etc.) ACT No. 3, 2018 (as Amended).

2. Accordingly, your name has been entered in the Council's Register as a Fully Registered Engineer, in the field of **Civil** Engineering Practice.
3. **Your Registration Number is R69067.**
4. You are entitled to use the prefix **Engr.** before your name.
5. You will be notified via your email when your certificate of registration is ready for collection.
6. An official receipt of payment of your registration, issuance of certificate, iron seal and security seal in the sum of N63,000.00 (Sixty Three Thousand Naira) has been collected by you. Note that your security seal expires by 31st December of every year and has to be renewed latest January 31st of the new year.
7. In any future correspondence with the Council, please quote your registration Number.

Yours Faithfully,

Engr. Prof. Adisa, A. Bello FNSE, FAEng, FNIMechE
Registrar

ỌBAFEMI AWOLỌWỌ UNIVERSITY
ILE-IFE



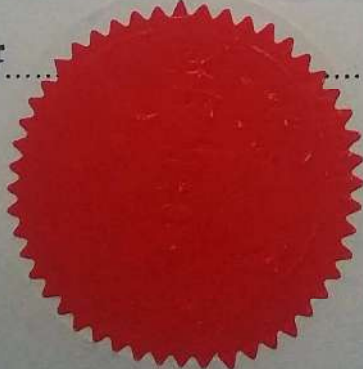
Michael Olusegun OLAREWAJU

having completed the approved course of study and
fulfilled all the prescribed conditions during
the **Rain Semester** **2017**
examinations has been admitted by the Senate
to the Degree of

B. Sc. (Civil Engineering)

with **Second Class Honours (Upper Division)**

Given under our hands this **25th**
day of **April** **2018**



DEAN

REGISTRAR

VICE-CHANCELLOR

ISSA, Muritala Olamilekan

CONTACT ADDRESS: No 1, Tunde Muhammed Road, off Fate road, Ilorin, Kwara.

MOBILE: 08165979792 **Email:** muismoraz@gmail.com **SEX:** MALE

STATE OF ORIGIN: KWARA STATE **DATE OF BIRTH:** 11/07/1994

PERSONAL STATEMENT

A highly resourceful, innovative, and enthusiastic Civil Engineer with considerable knowledge of modelling, designing, and construction of engineering infrastructures. A quick learner who can absorb new ideas and willing to work and achieve positive results both individually and as part of a team.

CAREER OBJECTIVE

Willing and committed to identifying and implementing continuous developments, my goal is to attain challenging positions, one which will make the best use of existing skills and also further my personal and professional development.

EDUCATION & AWARDS

UNIVERSITY OF ILORIN, ILORIN, KWARA STATE. 2012-2017

Award: B.ENG CIVIL ENGINEERING

SECOND CLASS UPPER HONOURS (4.17/5)

Award: SHELL PETROLEUM DEVELOPMENT COMPANY (SPDC) **2014-2017**

University Scholarship Award Scheme Recipient (National Merit Scholarship Award Category)

UNIVERSITY OF ILORIN SECONDARY SCHOOL, ILORIN, 2006-2012
KWARA STATE.

Award: Secondary School Certificate Examination (SSCE)

ABDUL-AZZEZ ATTAH MEMORIAL SCHOOL, ILORIN, 2000-2006

KWARA STATE.

Award: Primary School leaving Certificate

LEADERSHIP AND PROFESSIONAL CERTIFICATION

**REGISTERED MEMBER - COUNCIL FOR THE REGULATION OF ENGINEERING
IN NIGERIA (COREN) (R68780) 2022**

GRADUATE MEMBER NIGERIAN SOCIETY OF ENGINEERS (GMNSE) 2018

EXFORD GLOBAL CONSULT 2017

- Project Management Professional (PMP)
- Health Safety and Environment (HSE 1,2,3)
- Human Resource Management (HRM)
- Customer Service and Relationship Management (CSRM)

HEAD BOY (AAMS) 2006

ATTRIBUTES AND SKILLS

- CAD drafting, detailing, and designing (AutoCAD)
- Prota structures and Orion for structural design and detailing
- Revit Structures for structural modeling.
- Versatile in the use of Microsoft Office suite (Word, Excel, PowerPoint, Outlook).
- Understanding and interpretation of Structural drawings, Piping, and Instrumentation Diagrams (P&ID)
- Project Management, Leadership, and Organizational skills.
- Creative, innovative, and willing to learn new things.
- Good team player with strong interpersonal Relations skills.
- Strong oral and written communication skills
- Ability to work under pressure with minimum supervising.

WORK EXPERIENCE

STRUCTURAL ENGINEER, FAP CONSULTING ENGINEERS, IKOYI, LAGOS

(JUN 2019-)

Job Responsibilities:

- Structural model, design, and construction supervision of a 8 Story luxury apartments for LSDPC at keffi lagos state (144 units) supported on piled foundation
- Structural model, design, and construction supervision of a 2 story Reinforced concrete shopping mall with steel roof at Oniru, Lagos supported on raft foundation.
- Structural model and design of a 2 story reinforced concrete hospital building at banana island, Lagos.

- Structural model, design, and construction supervision of a 3 story steel framed container structure at Unilag.
- Structural model and design of a 7 story reinforced concrete residential structure with gym, lounge, and swimming pool at Onikoyi, Banana Island.
- Structural model, design, and construction supervision of a 8 story reinforced concrete building at Kofo Abayomi, Lagos supported on piled foundation.
- Structural model, design, and construction supervision of a 5 story commercial development with the suspended swimming pool at Ibeju Lekki.
- Structural remodeling, renovation, and façade steel design of Glo experience center, Trans-Amadi, Port Harcourt.
- Structural integrity assessment and intervention of existing 2 story building with gym and swimming pool at V/I, Lagos using non-destructive testing (NDT) with Schmidt hammer.
- Structural remodeling and façade steel design of Glo outlet buildings in Lagos, Warri, Asaba, Abuja, Ajaokuta, and Enugu.

CIVIL INTERN ENGINEER, LEE ENGINEERING AND CONSTRUCTION, WARRI

NYSC (JAN 2018-OCT 2018)

Job Responsibilities:

- Assisted in planning and coordinating civil unit activities which included Cracking/Excavation of concrete floor, the casting of an excavated floor, block wall and plastering of fence, formwork, reinforcement, and casting of drainage slabs.
- Preparation of bill of engineering measurement and evaluation (BEME) and Material take-off (MTO) for the various civil unit activities stated above.
- Use of dumpy level to measure, transfer, and set heights.
- Civil foundation construction for access control turnstile gate.
- Civil/structural works and CAD drawings for lee production yard (equipment and workshop layout).
- Preparation of job hazard analysis (JHA) worksheet.
- Preparation of Permit to Work (PTW) and toolbox meeting sheets for Civil Works.
- Ensuring proper housekeeping.
- Proper documentation of engineering activities/projects.
- Assisted the GBARAN project civil engineering team in CAD drawings for the gbaran camp temporary facilities layout and preparation of bill of engineering, measurement, and evaluation (BEME) for the project.
- Part of the ASSA NORTH project civil engineering team. Responsibilities include preparation of early works deliverables such as CAD drawing of temporary facilities layout and bill of materials for temporary facilities.

INDUSTRIAL TRAINEE, INDEX ENGINEERING CONSULTANT, ILORIN

SIWES (JULY 2015-DEC 2015)

Job Responsibilities:

- Assisted in generating 2D shop drawings for a project.
- Assisted in the design of structural beams and slabs.
- Assisted in taking GPS coordinates of road pavement features (median, shoulder, drainage) for the dualization of the road.

INDUSTRIAL TRAINEE, MUIS ENGINEERING, ILORIN

INTERN (JAN 2016-MARCH 2016)

PROJECT: Construction of Language Laboratory at Kwara State University.

Job Responsibilities:

- Assisted in setting out, excavation, and foundation works.
- Procurement of materials (cement and aggregates) needed for the construction.
- Assisted in a laboratory test of materials to be used for the construction.
- Interpretation of the architectural and structural drawings.
- Assisted in the supervision of artisans and semi-professionals during concrete pouring, tying of reinforcements, formwork construction, and block set.

EXTRACURRICULAR ACHIEVEMENTS AND HOBBIES

- I was part of the committee that organized the annual civil engineering students conference in my university from 200level to 500 level
- I was in charge of procurement, logistics, and supply chain during my vacations at neighborhood ventures, Ilorin.
- My hobbies include playing football, computer games, and software. I also like reading news, especially news related to current trends in internet technology and politics.

REFEREES

DR. I.T. YUSUF

Department of Civil Engineering, University of Ilorin

08036753271

Ityusuf@yahoo.com

ENGR. TUNJI FASHANU

Managing Director

FAP CONSULTING, LAGOS

07067363372



Council for the Regulation of Engineering in Nigeria

Established by Decree of 1970, Amended by Decree 27 of 1992, Now Cap E11 Engineering (Registration, Etc), (Amendment) Act, 2018

HEAD OFFICE: 22 Addis Ababa Crescent, Wuse Zone 4, P.O.Box 8461 Wuse, Abuja. Tel: 07098827873, 07088697804, 08145090579

E-mail: info@coren.gov.ng, accounts@coren.gov.ng, registration@coren.gov.ng Website:www.coren.gov.ng

PRESIDENT: Engr. Ali A. Rabi, FNSE

VICE PRESIDENT: Engr. Vernatius C. Igiri, FNSE

REGISTRAR: Engr. Prof. Adisa, A. Bello FNSE, FAEng, FNIMechE

08 September, 2022

COREN/REG/R68780

Engr. Issa, Muritala Olamilekan

Dear Sir,

NOTIFICATION OF FULL REGISTRATION

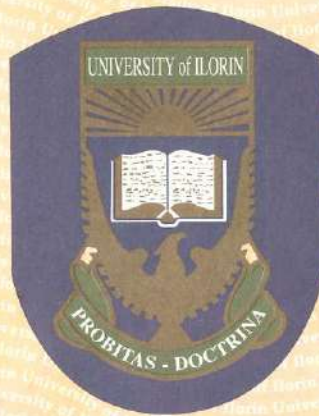
This is to certify that you have fulfilled all the conditions prescribed by the Council for the Regulation of Engineering in Nigeria, **COREN**, as a statutory regulatory organ of government as established under the provisions of Engineers (Registration, etc.) ACT No. 3, 2018 (as Amended).

2. Accordingly, your name has been entered in the Council's Register as a Fully Registered Engineer, in the field of **Civil** Engineering Practice.
3. **Your Registration Number is R68780.**
4. You are entitled to use the prefix **Engr.** before your name.
5. You will be notified via your email when your certificate of registration is ready for collection.
6. An official receipt of payment of your registration, issuance of certificate, iron seal and security seal in the sum of N63,000.00 (Sixty Three Thousand Naira) has been collected by you. Note that your security seal expires by 31st December of every year and has to be renewed latest January 31st of the new year.
7. In any future correspondence with the Council, please quote your registration Number.

Yours Faithfully,

Engr. Prof. Adisa, A. Bello FNSE, FAEng, FNIMechE
Registrar

UNIVERSITY OF ILORIN



071905

This Is To Certify That

Muritala Olamilekan ISSA

*having completed an approved course of study
passed the prescribed examinations and fulfilled
all other conditions, has this day, under the authority
of the Senate, been admitted to the Degree of*

Bachelor of Engineering

with **SECOND CLASS HONOURS (UPPER DIVISION)**

in

CIVIL ENGINEERING

VICE-CHANCELLOR

REGISTRAR

26th September, 2017

DATE



Oluwadamilare Charles ADESINA

(+234) 8134074909 | Chrles@fapconsult.com

40B, Isale Eko Avenue, Dolphin Estate, Ikoyi, Lagos, Nigeria

About me:

I am a deft and versatile civil engineer with a passion for structural design of infrastructure as well as collaboration with project teams. With a strong background in structural engineering coupled with great professional experience acquired over the years, I have a strong interest in providing technology-driven solutions to support resilient and sustainable developments.

EDUCATION AND TRAINING

14/09/2012 – 25/04/2018 – Ile Ife, Nigeria

B.SC. CIVIL ENGINEERING – Obafemi Awolowo University, Ile- Ife.

I offered courses in mathematical methods, engineering analysis, mechanics of materials, geology, structural analysis and design of structures, transportation engineering, environmental engineering, construction engineering, fluid mechanics, surveying etc.

(CGPA-4.31/5.00-Magna Cum Laude) | EQF level 6 | oauife.edu.ng

RESEARCH INTEREST

Development of smart systems, materials, and technologies for predicting structural behavior and response under extreme loadings, particularly the development of tailorable, multi-functional, eco-friendly and hybrid materials. Structural dynamics.

RESEARCH EXPERIENCE

10/2019– CURRENT

Graduate Engineer (Research and Teaching)

FAP Consulting

- Research on dynamic load impact on slabs.
- Extensive research on fatigue verification checks on structural elements.
- Research on structural cracks caused by effects of buoyancy in underground reinforced concrete walls.
- Structural health assessment using non-destructive methods.
- Teaching graduate and student interns structural analysis, design and use of drafting, BIM and design software.

01/2019 – 09/2019

Graduate Intern

ARUP Nigeria

- Collaborative research on column relocation and structural remodelling of an existing operational factory building.
- Collaborative research on finite element model for optimisation of raft foundation supporting 60m high telecommunication tower.

07/2017 – 03/2018

Undergraduate Research

Obafemi Awolowo University, Ile- Ife.

- Collaborated with my project supervisor to carry out an extensive comparative study on lateritic soils separately stabilised with Cement and Palm Kernel Shell Ash (PKSA).

WORK EXPERIENCE

07/10/2019 – CURRENT – Lagos, Nigeria

STRUCTURAL ENGINEER – FAP Consulting

My key role and responsibilities as a Structural Engineer are not limited to the following;

- Production of structural general arrangement drawings using CAD and BIM software proficiently.
- Structural analysis and design of reinforced concrete, steel and composite structures to relevant design code and standards.
- Collaborating with other project disciplines (architecture, mechanical, electrical and plumbing (MEP), project management etc.)
- Production of design calculation reports, engineering details and sketches required for construction.
- Structural assessment and investigation of structures as well as preparation of detailed engineering report.
- Supervision of construction to ensure compliance with drawings and details to optimum quality.

07/01/2019 – 05/10/2019 – Lagos, Nigeria

GRADUATE ENGINEERING INTERN – ARUP NIGERIA

- Production of structural general arrangement drawings using CAD and BIM software proficiently.
- Structural analysis and design of reinforced concrete, steel and composite structures.
- Preparation of project engineering report/design calculation reports.

09/01/2017 – 05/05/2017 – Lagos, Nigeria

STUDENT INTERN – HANCOCK OGUNDIYA & PARTNERS LIMITED

- Preparation of structural general arrangement drawings to suit proposed building architecture.
- Analysis and design of reinforced concrete and steel structures by manual computation and software.
- Supervision and monitoring of construction works on site.

PROJECTS

04/2020 – CURRENT

Nestle Nigeria PLC, Agbara: VBD 5 All-In-One Project

- Expansion and modification of the existing Nestle Milo factory production and packaging area taking into consideration the constraint of continued operations during construction.
- Preparation of general arrangement drawings for the proposed Nestle VBD Building and Utility Pipe Bridge Relocation in phases.
- Development of structural analysis and design models (steel, concrete and composite sections) for the existing and proposed structures.
- Preparation of engineering report for International peer review
- Meticulous coordination with architects, mechanical and electrical engineers, quantity surveyors and Project managers.

08/2020 – 09/2020

Nestle Nigeria PLC, Agbara: Assessment of Cracks on Slab Soffit of Airlock Corridor.

- Structural investigation and assessment of cracks underneath failed corridor slab within factory under dynamic load.
- Structural modelling and analysis of replacement concrete slab considering daily operational dynamic load impact on the slab.
- Design and fatigue verification check of the new slab.
- Preparation of engineering report for International peer review

04/2019 – 03/2020

Nestle Nigeria PLC, Agbara: Culinary Building Column Remodelling and Relocation

- Scheming the existing Nestle Nigeria Agbara Maggi production factory (Culinary building) to support new mechanical plants by relocating two existing columns while retaining the structural integrity of the building.
- Production of structural general arrangement drawings showing phases for construction for the remodelled building.
- Development of structural analysis and design model for the existing and proposed building
- Generation of structural drawings and details showing phases for construction for the remodelled building.
- Preparation of engineering report for International peer review

06/2021 – CURRENT

Stratongate Condor: Proposed Residential Development at Kofo Abayomi Drive, Victoria Island, Lagos.

- Production of structural general arrangement drawings for the proposed seven-storey residential development.
- Development of structural analysis and design model for the proposed structure.
- Design of critical cantilever beams (approximately 6m) and transfer beams on the first floor to support entire upper floors including a suspended swimming pool on the sixth floor.
- Coordination and design reviews with architects, mechanical and electrical engineers on the project.
- Preparation of design report for local authority approval.

04/2020 – CURRENT

Focal Point: Proposed Mixed- Use Development in Banana Island, Lagos.

- Production of structural general arrangement drawings for the proposed 14-storey mixed-use development.
- Development of structural analysis and design model for the proposed structure.
- Coordination and design reviews with architects, mechanical and electrical engineers on the project.
- Preparation of design report for local authority approval.

11/2019 – 02/2020

Nigerian Liquefied Natural Gas (NLNG): Structural Integrity Assessment of Effluent Treatment Tank

- Site visit for field inspection and perform Non-Destructive Tests on tank Reinforced concrete walls.
- Desk study and preparation of detailed structural investigation report.

● **TECHNICAL SKILLS**

Engineering and Computer Aided Design

- Autodesk AutoCAD, Autodesk Revit, Autodesk Robot, Tekla Structural Designer, Bentley StaadPro, CSI Etabs, SAP2000, Prokon, Spreadsheet.

Graphics and Document Creation

Microsoft Office Suite, Adobe Photoshop, Adobe Lightroom

Programming Skills

Matlab

● **SOFT SKILLS**

Communication and Interpersonal Skills

- Excellent verbal and written communication skills which help in proper communication of goals in order to achieve quality results.
- Great presentation skills as I have made a number of physical and virtual presentations.
- Good networking skills as a result of my involvement in extracurricular and Community Development activities.

Critical Thinking

Problem Solving Attitude

● **HONOURS AND AWARDS**

12/2020

Most dedicated and diverse Graduate Engineer of the Year – ARUP Nigeria

● NETWORKS AND MEMBERSHIPS

Council for the Regulation of Engineering in Nigeria (COREN)

- Corporate Member (In-View)

10/2017 – 04/2018

Nigerian Institute of Civil Engineers-Students Affiliate (NICE-SA),

Obafemi Awolowo University, Ile-Ife.

- Member, Student Representative Council (SRC).

● VOLUNTEERING

07/2019

NYSC- Community Development Service

- Career-Talk presentation and counselling for over 100 high school students.

ỌBAFEMI AWOLỌWỌ UNIVERSITY
ILE-IFE



Oluwadamilare Charles ADESINA

having completed the approved course of study and fulfilled all the prescribed conditions during

the ***Rain Semester*** ***2017***

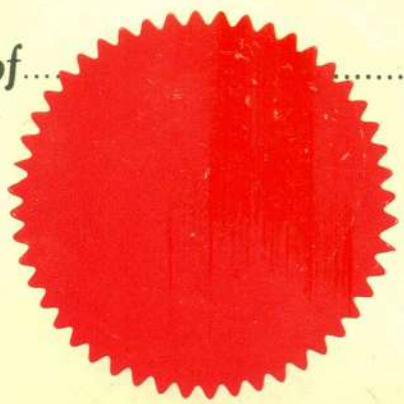
examinations has been admitted by the Senate to the Degree of

B. Sc. (Civil Engineering)

with ***Second Class Honours (Upper Division)***

Given under our hands this ***25th***

day of ***April*** ***2018***



DEAN

REGISTRAR

VICE-CHANCELLOR



Adebayo Matin ADEDAYO

Nationality: Nigerian (Nigeria) 📞 (+234) 08140423617 **Date of birth:** 19 Jan 1998

✉ **Email address:** adedayobayo90@gmail.com

🌐 **LinkedIn :** www.linkedin.com/in/adedayo-adedayo-724aa2152

📍 **Address:** 40b isale Eko Avenue, Dolphin Estate, 104211 Ikoyi (Nigeria)

ABOUT ME

I am a deft and versatile civil engineer with a passion for structural design of infrastructure as well as collaboration with project teams. With a strong background in structural engineering coupled with great professional experience acquired over the years, I have a strong interest in providing technology-driven solutions to support resilient and sustainable developments. My goal is to be able to implement all my skills, knowledge and experience in the delivery of resilient infrastructure thereby contributing my quota to world sustainable development at large.

WORK EXPERIENCE

Structural Engineer

FAP NIGERIA [2 Dec 2019 – Current]

City: Lagos

Country: Nigeria

My key role and responsibilities as a Structural Engineer are not limited to the following:

- Structural analysis and design of reinforced concrete, steel and composite structures to relevant design code and standards.
- Production of structural general arrangement drawings using CAD and BIM software proficiently.
- Collaborating with other project disciplines (architecture, mechanical, electrical and plumbing (MEP), project management etc.)
- Production of design calculation reports, engineering details and sketches required for construction.
- Structural assessment and investigation of structures as well as preparation of detailed engineering report.
- Supervision of construction to ensure compliance with drawings and details to optimum quality.
- Production of Quality Management Systems (QMS) documentation for projects in order to ensure quality control and quality assurance is maintained throughout the projects.

Graduate Engineering Intern

ARUP NIGERIA [7 Jan 2019 – 2 Dec 2019]

City: Lagos

Country: Nigeria

- Structural analysis and design of reinforced concrete, steel and composite structures.
- Production of structural general arrangement drawings using CAD and BIM software proficiently.
- Preparation of project engineering report/design calculation reports.

Student Intern

ARUP NIGERIA [9 May 2017 – 5 Aug 2017]

City: Lagos

Country: Nigeria

- Preparation of structural general arrangement drawings to suit proposed building architecture.

- Analysis and design of reinforced concrete and steel structures by manual computation and software.
- Supervision and monitoring of construction works on site.
- Studied project concepts and architectural drawings.
- Carried out General arrangement and computer aided design(drafting).
- Assisted in Geological Designs.
- Utilized software to handle cost estimations on several key government projects involving water supply and structural designs.

EDUCATION AND TRAINING

B.Sc. Civil Engineering

Kwame Nkrumah University of Science and Technology [13 Aug 2014 – 13 Jun 2018]

Address: Accra Rd, Kumasi, Ghana, 00000 Kumasi (Ghana)

knust.edu.gh

Field(s) of study: Civil Engineering

Final grade : First Class Honors (CWA - 71.51/100) – Level in EQF: EQF level 6

I took courses in mathematical methods, engineering analysis, mechanics of materials, geology, structural analysis and design of structures, transportation engineering, environmental engineering, construction engineering, fluid mechanics, surveying etc.

LANGUAGE SKILLS

Other language(s):

English

LISTENING C2 READING C2 WRITING C2

SPOKEN PRODUCTION C2 SPOKEN INTERACTION C2

NETWORKS AND MEMBERSHIPS

Council for the Regulation of Engineering in Nigeria (COREN)

- Corporate Member (In-View)

CONFERENCES AND SEMINARS

Future impact of innovation in the construction industry - focus on 4th industrial revolution

[The Big 5- International Building & Construction Show, 31 Aug 2021]

<https://www.thebig5.ae>

Sustainability and the ACI Building Code: Plans for the 2025 Edition of ACI 318

[The Big 5- International Building & Construction Show, 31 Aug 2021]

<https://www.thebig5.ae>

PROJECTS

Rack Centre Facility at Plot 18 & 18A Jagal Close Oregun, Ikeja, Lagos State(Data Centre)

[Jun 2021 – Current]

- Structural Modelling, analysis, and design of the proposed industrial building comprising of reinforced concrete, steel, and composite sections.
- Preparation of general arrangement drawings and method statements for construction.
- Meticulous Coordination with architects, mechanical and electrical engineers, fire and security department, quantity surveyors, and Project managers using BIM 360.
- Meticulous Documentation using BIM 360.

- Preparation of calculation report for International peer review with Arup UK team.

African Data Centre at Eko Atlantic

[Jan 2021 – Mar 2022]

- Structural Modelling, analysis, and design of the proposed industrial building comprising of reinforced concrete, steel, and composite sections.
- Preparation of general arrangement drawings and method statements for construction.
- Meticulous Coordination with architects, mechanical and electrical engineers, fire and security department, quantity surveyors, and Project managers using BIM 360.
- Meticulous Documentation using BIM 360.
- Preparation of calculation report for International peer review with Arup South African team.

EMOWAA Archaeological and Conservative Pavillion At Plot 61977 Zone HI/A 12/Ogboka Oredo L.G.A

[Jun 2021 – Current]

- Structural Modelling, analysis, and design of the proposed industrial building comprising of reinforced concrete, steel, and composite sections.
- Structural Design of Rammed earth wall to fit the Archaeological purpose of the Museum
- Preparation of general arrangement drawings and method statements for construction.
- Meticulous Coordination with architects, mechanical and electrical engineers, fire and security department, quantity surveyors, and Project managers using BIM 360.
- Meticulous Documentation using BIM 360.

L5: Proposed Residential Development at Plot L5, Banana Island Foreshore Estate, Eti-Osa, Lagos State.

[Jan 2022 – Current]

- Production of structural general arrangement drawings for the proposed Eighteen storey residential development.
- Structural Modelling, analysis, and design of the proposed structure.
- Coordination and design reviews with architects, mechanical and electrical engineers on the project.
- Preparation of design report for local authority approval.

Nestle Nigeria Plc, Flowergate Factory: Proposed Golden Morn Building

[Oct 2021 – Current]

- Structural Modelling, analysis, and design of the proposed industrial building comprising of reinforced concrete, steel, and composite sections.
- Preparation of general arrangement drawings and method statements for construction.
- Coordination with architects, mechanical and electrical engineers, quantity surveyors, and Project managers.
- Preparation of calculation report for International peer review

Project Mangrove for Kimberly Clark Warehouse/Factory at Ikorodu.

[Feb 2020 – Sep 2021]

- Structural Modelling, analysis, and design of the proposed factory building steel Portal Frame with compound section and truss frame.
- Preparation of general arrangement drawings and method statements for construction.
- Coordination with architects, mechanical and electrical engineers, quantity surveyors, and Project managers.
- Preparation of calculation report for International peer review with Arup UK Team.

Nestle Nigeria PLC, Agbara: VBD 5 All-In-One Project

[Apr 2020 – Current]

- Expansion and modification of the existing Nestle Milo factory production and packaging area taking into consideration the constraint of continued operations during construction.
- Preparation of general arrangement drawings for the proposed Nestle VBD Building and Utility Pipe Bridge Relocation in phases.
- Development of structural analysis and design models (steel, concrete and composite sections) for the existing and proposed structures.
- Preparation of engineering report for International peer review
- Meticulous coordination with architects, mechanical and electrical engineers, quantity surveyors and Project managers.

The Tiffany Apartments: Proposed Residential Development Lekki, Lagos State.

[Oct 2021 – Jan 2022]

- Structural health assessment of first-floor structural elements of the building using Non-Destructive Tests.
- Desk study and interpretation of field test results
- Design check for the installation of Carbon Fibre-Reinforced Polymer (CFRP) and Steel plate to strengthen the shear capacity of the first-floor beams.
- Supervision of remedial works.

Proposed Residential Developmental MacDonald Street, Ikoyi, Lagos State

[Nov 2020 – Current]

- Structural Modelling, analysis, and design of the proposed industrial building comprising of reinforced concrete, steel, and composite sections.
- Preparation of general arrangement drawings and method statements for construction.
- Coordination with architects, mechanical and electrical engineers, quantity surveyors, and Project managers.
- Preparation of calculation report for local authority approval

Nestle Nigeria PLC, Agbara: Assessment of Cracks on Slab Soffit of Airlock Corridor.

[Aug 2020 – Nov 2020]

- Structural assessment and retrofitting of cracks observed at the soffit of an existing slab at the airlock corridor within the factory.
- Design check and recommendation of the use of Carbon Fiber Reinforced Polymer strips to strengthen the failed slab before its reconstruction.
- Structural modelling, analysis, and design of replacement concrete slab considering daily operational dynamic load impact on the slab.
- Fatigue verification check of the new slab.
- Preparation of engineering report for International peer review

Nestle Nigeria PLC, Agbara: Culinary Building Column Remodelling and Relocation

[Apr 2019 – Mar 2020]

- Scheming the existing Nestle Nigeria Agbara Maggi production factory (Culinary building) to support new mechanical plants by relocating two existing columns while retaining the structural integrity of the building.
- Production of structural general arrangement drawings showing phases for construction for the remodelled building.
- Development of structural analysis and design model for the existing and proposed building
- Generation of structural drawings and details showing phases for construction for the remodelled building.
- Preparation of engineering report for International peer review

HONOURS AND AWARDS

Most dedicated and diverse Graduate Engineer of the Year

ARUP Nigeria [Dec 2020]

Provost's list, KNUST

Kwame Nkrumah University of Science and Technology [13 Jun 2018]

Excellent Student award, KNUST

Kwame Nkrumah University of Science and Technology [13 Sep 2017]

VOLUNTEERING

Look, Observe and Shape (LOS) Challenge

[Lagos, Nigeria, 21 Feb 2022 – 14 Mar 2022]

- A challenge to look into the community/environment in order to identify the various issues in terms of development.
- Observation of the challenges within the spaces as it relates to sustainable development and the SDGs.
- Create actionable solutions to the challenges identified.

TECHNICAL SKILLS

Engineering and Computer Aided Design

- Autodesk AutoCAD, Autodesk Revit, Autodesk Robot, Tekla Structural Designer, Bentley StaadPro, CSI Etabs, SAP2000, Prokon, Spreadsheet.

Graphics and Document Creation

Microsoft Office Suite, Adobe Photoshop, Adobe Lightroom

Programming Skills

Matlab

SOFT SKILLS

Communication and Interpersonal Skills

- Excellent verbal and written communication skills which help in proper communication of goals in order to achieve quality results.
- Great presentation skills through consistent physical and virtual presentations.
- Good networking skills and teamwork spirit through involvement in extracurricular and volunteer activities.

Critical Thinking

Problem Solving Attitude

RESEARCH INTEREST

Optimization of frameworks for the support of resilient and sustainable infrastructure, structural dynamics, development of smart systems and technologies for predicting structural response and failure under extreme loadings.

RESEARCH EXPERIENCE

Graduate Engineer (Research and Teaching)

[Oct 2019 – Current]

ARUP Nigeria

- Research on concrete strengthening using Fibre-Reinforced Polymers.
- Research on dynamic load impact on slabs.
- Extensive research on fatigue verification checks on structural elements.
- Structural health assessment using non-destructive methods.
- Teaching graduate and student interns structural analysis, design, and use of drafting, BIM and design software.



KWAME NKRUMAH
University of Science and Technology

This is to certify that

Adebayo Martin Adedayo

Having pursued a prescribed course of study,
and having passed the requisite examinations this *1st June, 2018*
has been duly admitted by the University to the Degree of

Bachelor of Science
(Civil Engineering)

FIRST CLASS HONOURS

Given under our hand


Vice-Chancellor


Registrar

Student Registration No:

2210714



00157201

Muritala Oluwaseun AROWOLO

Address: 12-17160 Avinguda Anthoni, Angles, Girona, Spain

Email: oluwaseunarrowolo9@gmail.com

Mobile No: (+34) 697239858

A. Personal Profile

I am a smart, diligent, and experienced Civil/Structural Engineer. I have experience designing multi-storey building, offshore structures with full understanding of construction industry. I have in-depth knowledge of various design codes of practice (British Standards and Eurocodes) with full grasp of various design softwares and drafting tools. My communication and team playing skills are worthy of note Above all, I am a law and regulations compliant individual without any record of criminal activities.

B. WORK EXPERIENCE AND DUTIES

1. FAP CONSULTING ENGINEERS Nigeria **April 2021 till present**

Role: Civil/Structural Engineer

- Responsible for design of concrete, steel and timber structures.
- Responsible for carrying out structural monitoring and assessment of infrastructures
- To perform site visitation to ensure compliance of construction to design and preparation of reports.

Major Projects Highlight

- a) Centenary City Church Maquee Project, Epe - Ajah road, Lagos: Designed a 40 metres clear span steel structure.
- b) Melrose Apartment Project, Ikoyi, Lagos: Designing a 28 storeys {91 metres tall} residential building (on-going).
- c) Amlad Place Project: A twin (15 and 8 storey) residential building, at Olori Onikoyi road, Banana Island, Lagos (on-going).
- d) Vixen Enterprise Limited - Adenuga V Tower Project: A multi-storey of 30-storey building (145metres tall), Ozumba Mbadiwe Avenue, Victoria Island, Lagos, Nigeria (on-going)
- e) Structural Assessment and Retrofitting of a First Baptist Church, Lagos Island, Lagos, Nigeria.
- f) Structural Assessment of Nigeria Brewery Iganmu Water Storage Tank, Iganmu, Lagos
- g) Seplat Energy – Sapele Gas Plant Equipments Foundation Design
- h) Seplat Energy – Sapele West Jetty Rehabilitation Project (structural Assessment and Retrofitting of Jetty and ancillary structures)

- i) Nestle Flowergate Distribution Centre - Sagamu, Ogun state. This is a steel portal frame of 124m by 120m
- j) Development of Data centre for NIBSS Data Centre.

2. Aron Nigeria Limited (Construction Engineers) September 2020 – March 2021
Role: Civil Engineer

- Supervision of construction of a 4-storey educational office complex at Yaba College of Technology.
- Preparation of weekly report of construction activities and preparation of works schedule.

3. Tacumi Consulting Engineers January 2016 – August 2020
Role: Structural Engineer

- Design of concrete and steel structures in accordance to BS and Euro codes of practice
- Preparation of structural details in accordance to codes and designer manuals
- Structural Assessment of dilapidated buildings.

Projects Highlight

- a) NANA Project – A 6-storey residential building, Lekki, Lagos.
- b) National Sugar Development Commission head office Abuja.
- c) Dadoo Residential Building - Structural Design of a 16 storey building - (completed)
- d) Ogun State Government House Renovation, Abeokuta, Ogun state.
- e) Mekuen Jetty Project – Design of jetty at Corrona, Ikoyi, Lagos.
- f) Zenville Project – A multi-storey residential building, Lekki Lagos.

4. Richcont Nigeria Limited August 2012 - August 2013
(Construction of mass housing on 25 hectares of land)

Role: Site Manager

- Took site inventory and controlled the resources for the construction of the estate
- Supervision of construction activities

5. Aron Nigeria Limited July 2011 - October 2011
(Construction of a Monument/Pedestrian bridge)

Role: Intern

- a) Understudied senior engineers and craftsmen overseeing the construction of the reinforced concrete pedestrian bridge at Ijebu Ode, Ogun state.

C. EDUCATION BACKGROUND

Masters Degree

Universitat de Girona

Oct. 2022 - July 2023

European Masters Advanced Structural Analysis Using Composite Materials (FRP++)

An Erasmus Student Pursuing (FRP++) at University of Girona

IBM ARTIFICIAL INTELLIGENCE INTRO

June 2020

Bachelor of Science (BSc)

Obafemi Awolowo University, Ile-Ife, Osun State. 2015 - 2019

Grade: Second Class Upper (CGPA 4.15/5.00)

Dissertation: Application of natural radionuclide in the subsurface hydrogeology of Ife-North and Ife - South Local Government Areas, Osun state, Nigeria 2019.

Higher National Diploma (HND)

The Federal Polytechnic Ilaro, Ilaro, Ogun State. 2013 - 2015

Grade: Upper Credit (CGPA3.03/4.00)

Dissertation: An investigation into pozzolanic potential of maize cob ash and its ashing temperature 2015.

National Diploma (ND)

The Federal Polytechnic Ilaro, Ilaro, Ogun State. 2010 - 2012

Grade: Upper Credit (CGPA3.03/4.00)

D. RESEARCH EXPERIENCE

a) Arup Sustainability Research

October 2021- April 2022

Title: Sustainability Assessment Research: Measurement of Embodied Carbon of Construction Materials -Cement, Steel, Timber, Brick- in Nigeria This is a collaborative research within Arup global network (including Arup Nigeria, Arup London, Arup Chicago and 6 other Arup offices) aimed to measure embodied carbon for various construction materials so that local data to support our sustainable design to help the achievement of the global Net-Zero Carbon goal.

b) Application of natural radionuclide in the subsurface hydrogeology of Ife - North and Ife – South Local Government Areas, Osun state. Obafemi Awolowo University, Ile-Ife, Osun State 2018 – 2019

c) An investigation into pozzolanic potential of maize cob ash and its ashing temperature. The Federal Polytechnic Ilaro, Ilaro Ogun state.

E. PUBLICATION

- ❖ Jeje, J. M **AROWOLO, M.**, and Sodipo, A. (2020). “Application Of Natural Radionuclide In The Subsurface Hydrogeology of Selected Two Local Government Areas in South Western, Nigeria”. East African Journal of Engineering, 2 (1), no. 1, June 2020, pp14-22, doi:10.37284/eaje.2.1.148.

F. SCHOLARSHIP AWARDS

- a) Erasmus Mundus Scholarship 2022
- b) MTN Foundation Science & Technology Scholarship Scheme 2017
The award of 200,000 naira each year for three years (2017, 2018 and 2019) (cumulative of 600,00 naira) in support of my undergraduate studies as one of the 500 outstanding students in Nigeria.
- c) OAU Main Gate Competition Award (2nd Runner-Up) 2019
The award of 50,000 naira to my team for presenting novel solutions addressing the traffic congestion being experienced on the University roads, particularly at the University main entrance.

G. SKILLS

Autocad, Civil-3D and Revit; Staad Pro, Safe, Protastructure, Etabs, Robot Structural Analysis, PDMS, Tekla Structural Designer, Prokon design softwares; PowerPoint Office and MS Office suite; Python programming language and Grasshopper.

H. RESEARCH INTEREST

- Advanced Composite Material
- Structural Health Monitoring and Application of Artificial Intelligence in
- Smart City and Sustainable Infrastructure

I. CONFERENCES/ WBINARS/PRESENTATION

- a) 21st century challenges an revolution: flooding, building collapse and intelligent infrastructure. 6th Late Emeritus Professor M.O. Ogedengbe Annual Lecture and 1st Civil Engineering Competition, Obafemi Awolowo University, Ile-Ife. November 6, 2019.
- b) Role of civil engineers in energy efficient infrastructure: Design, construction and maintenance of Nigeria infrastructure. The Nigerian Institution of Civil Engineers' Students affiliate, University of Ilorin branch. June 19, 2019.
- c) Emerging technologies in construction in construction industry. The association of Civil Engineering Students' (ACES), Federal University of Agriculture Abeokuta, July 22, 2015
- d) Non-Linear Structural Analysis for Building Under Extreme loads September, 2021
- e) b) Introduction to Optimization: case studies and applications of practical problems. The Institution of Structural Engineers, UK. September, 2021
- f) 7th IEEE International Smart Cities Conference (ISC2 2021) September, 2021
- g) Grasshopper For All Engineers June, 2021
- h) 7th International course on Geotechnical and Structural Monitoring (IcGSM)-June, 2021
- i) Tension Structures -Past, Present and Future. The Institution of Structural Engineers, (Chester brach) UK. April, 2020

J. DEVELOPMENTAL COURSES AND SKILLS

- a) Machine learning (Data Science Nigeria) September 2021
- b) Project Management (LinkedIn Learning) April 2021
- c) Introduction to Artificial Intelligence (IBM) June 2020
- d) Python Programming Language (Edx and Coursera) March 2020

K. LEADERSHIPS AND VOLUNTEER

- a) Chairman Planning Committee of 6th Late Emeritus Professor M.O. Ogedengbe Annual
Lecture and 1st Civil Engineering Competition August-November 2019
Titled: 21st century challenges and revolution: flooding, building collapse and intelligent
infrastructure.
- b) Speaker of Student Union at Federal Polytechnic Ilaro in Parliamentary year of 2014/2015

INTEREST AND ACTIVITIES

Reading, traveling and playing video games

ỌBAFEMI AWOLỌWỌ UNIVERSITY ILE-IFE



.....*Muritala Oluwaseun AROWOLO*.....

having completed the approved course of study and
fulfilled all the prescribed conditions during

the.....*Rain Semester*.....*2019*

examinations has been admitted by the Senate
to the Degree of

.....*B. Sc. (Civil Engineering)*.....

with.....*Second Class Honours (Upper Division)*.....

Given under our hands this.....*17th*.....

day of.....*February*.....*2020*



.....*Olutadeke*.....
DEAN

.....*[Signature]*.....
REGISTRAR

.....*[Signature]*.....
VICE-CHANCELLOR